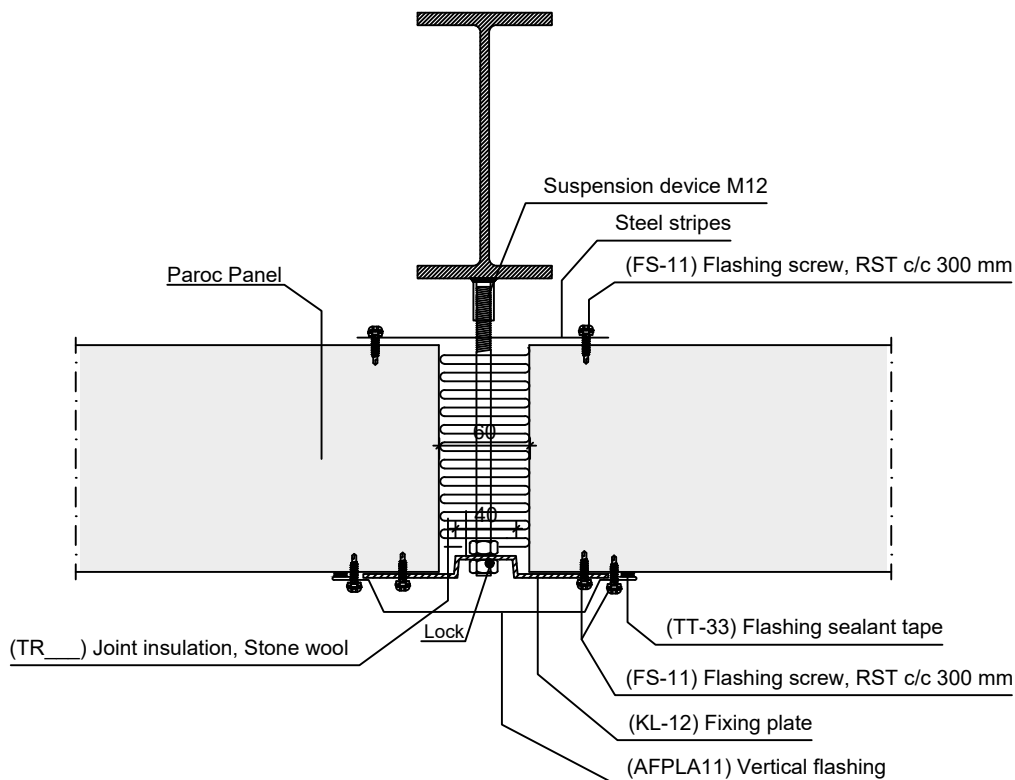
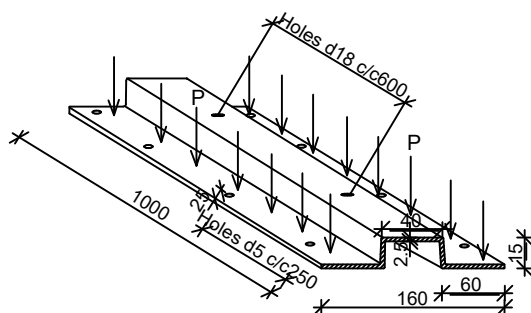


Attention!

See Paroc Panel System Technical
Guide for protection of ceiling panels!


KL-12
 $P_{MAX} = 2.5 \text{ kN/side when 50C stone wool type}$
 $P_{MAX} = 3.8 \text{ kN/side when 75C/F stone wool type}$


For fire rating see detail FI-C-201 and FI-C-202