



Paroc Panel System ArchiCAD add-on

1.2.2017

Terms and Conditions

Using and copying the application is not limited. The application and all its content are shipped without any warranty. Paroc Group Oy is not liable in any way of any damage or financial loss caused by the application.

By installing the application the user accepts these terms. The application is used with own responsibility.

Copyright Paroc Group Oy 2013-2017

1 Compatibility and installation

The application works with ArchiCAD versions 15-20. SE-versions are also supported. In version 18 the internal ID of the add-on was changed. It means that it is impossible to continue editing the panelings and flashings made with earlier versions (pre 18).

1.1 Windows

Close ArchiCAD and start the installer. After installation there will be item *PAROC Panel* in ArchiCAD menu Options. By default library ParocPanel is installed under ArchiCAD library folder (C:\Program Files\Graphisoft\ArchiCAD XX\Library XX).

There is no uninstaller. The application can be uninstalled manually by deleting folder *ParocPanel* under ArchiCAD Add-Ons folder (for example C:\Program Files\Graphisoft\ArchiCAD 15\Add-Ons).

1.2 Mac

Installation package contains folders *Paroc XX Mac Add-On*, *Paroc samples* ja *Paroc.lib*

Close ArchiCAD and move folder *Paroc XX Mac Add-On* to corresponding ArchiCAD Add-Ons folder. By default folder is located in Programs/Graphisoft/ArchiCAD XX/ArchiCAD Add-Ons.

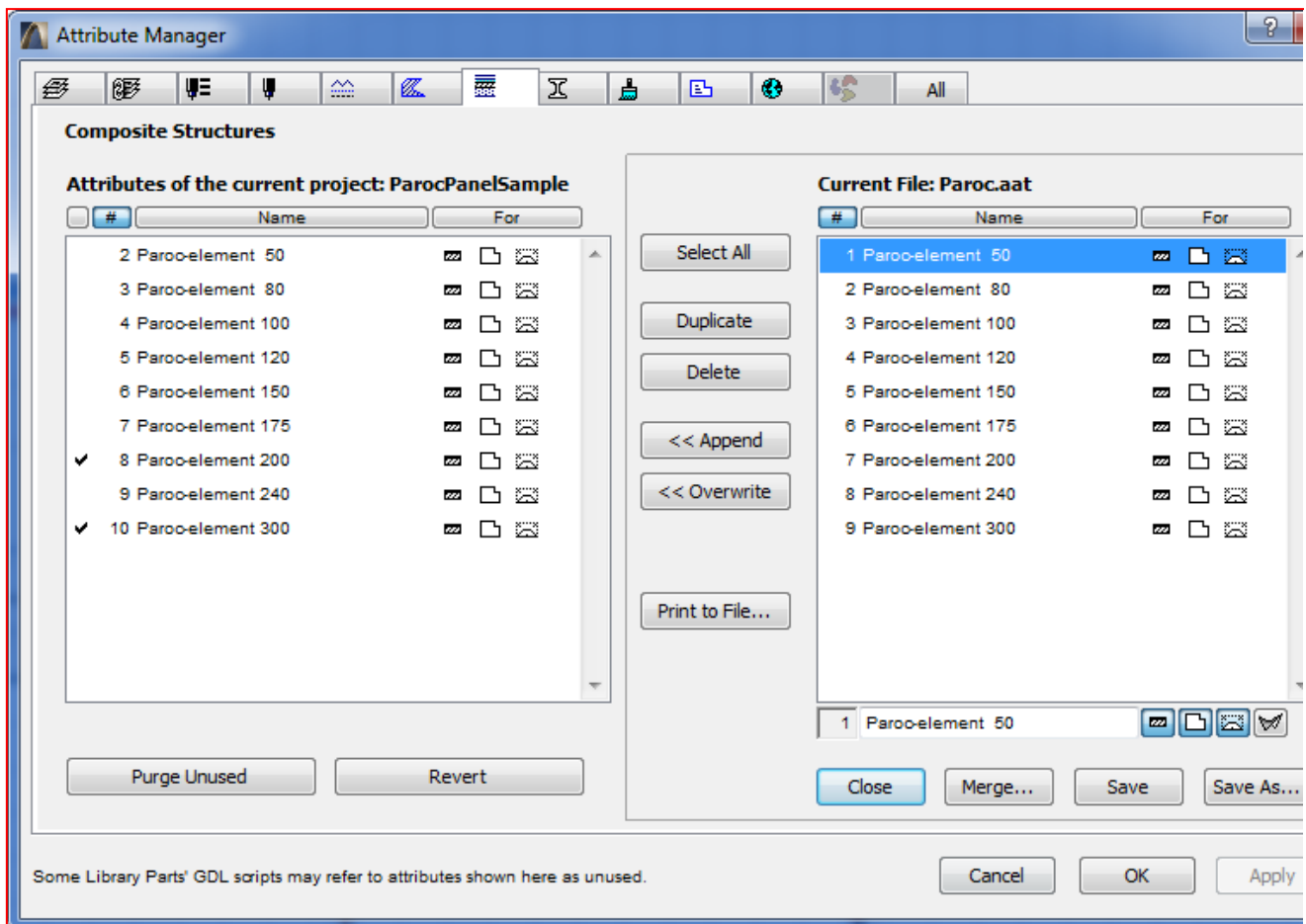
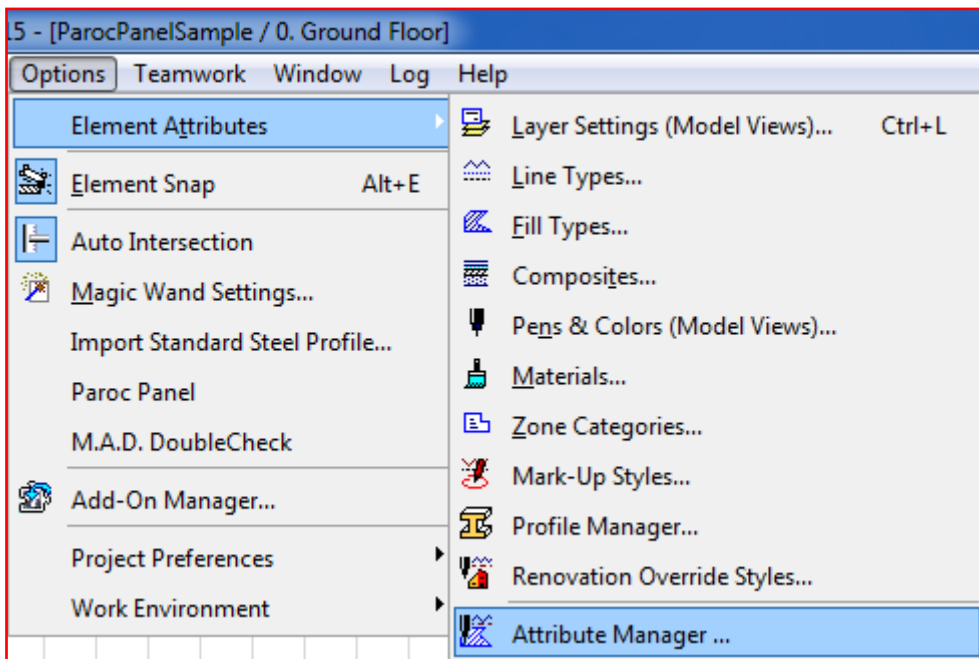
Paroc samples contains a sample model and PAROC panel structures.

Move or copy Paroc library *PAROC.lib* under your own libraries or ArchiCAD libraries.

2 Content

Application includes add-on, library, PARPC panel structures and a sample model.

After installation there is folder *Paroc ArchiCAD* on desktop (in Mac this is folder *Samples* in installation zip-package). It contains a sample model and instructions to place columns. **Get acquainted with this file first!** The same folder contains also PAROC panel structures which can be imported to your own model with Attribute manager:







The add-on observes changes in walls, slabs and flashings and updates the panels to match the changes. The add-on handles only panels created with its own tools. Manually placed items are not handled.

It is possible to add panel joints and flashings manually for example by moving and copying existing ones.

3 Functions

Placing the panels is controlled from two dialog pages. First page is to adjust the panels and other to adjust joints between the panels.

Paroc Panel tools





 Eng

▼ **Product chooser**

Usage: External Wall

☐ Limit the options

U-value max: 0,20

Fire resistance min: 0

Sound isolation Rw dB min: 0,00

▼ **General settings**

Panel type: AST@ T

Nominal thickness: 100

Steel thickness: 0,5 mm

Weight kg/m2: 17

U-value: 0.38

Fire resistance EI: 45

Sound isolation Rw dB: 29

▼ **Profiling**

Orientation: Horizontal

Outside/upper: Smooth

Material: PVDF

Colour: RR11 Spruce green

☐ AC-mat: ? MISSING

Inside/lower: Smooth

Material: Polyester

Colour: RR20 White

☐ AC-mat: ? MISSING

▼ **Detect wall exterior side**

☐ In composites exterior is first, fills left side
 ☒ In composites exterior is last, fills right side

▼ **Managing changes**

Update now





☐ Do not update automatically

Create

3.1 Panel adjustments

- *Product chooser* limits items that are listed in other fields.
- *General settings* are used to adjust the panel type
- *Profiling settings* are used to set the surface material and colour. It is possible to use any ArchiCAD material by checking the option AC-mat on. It is useful in case of special materials or rendering.
- *Detect wall* defines which side of the wall is exterior and which one interior side. Adjust exterior side right for current model.
- *Ulkopuolen tunnistus*, toiminnolla määritetään, kumpi puoli seinistä on ulkopinta ja kumpi sisäpinta. Tee määrittäminen oikein käytössä olevan mallin mukaisesti.
- *Update now* makes sure that paneling covers the whole wall. Existing panels are preserved if possible. Add-on cannot detect changes in all situations and in those cases the geometry is updated with this button. Possible causes for out of sync-situation are:
 - Changes in solid element operations
 - Changes in corner handling
- *Do not update automatically* controls updating of selected panels: When checked the add-on does not reflect changes in parent walls etc into paneling. Normally this is unchecked.
- *Create* removes all panels related to selected parent elements and recreates everything from scratch.

Paroc Panel tools





 Eng

Flashings vertical: Deco LF-3A

Colour: RR22 Grey

☐ AC-mat: ? MISSING

Bottom flashing: Socket flashing

Colour: RR26 Yellow

☐ AC-mat: Paint-15

Top flashing: Eave Flashing

Colour: RR36 Light green

☐ AC-mat: Paint-06

Left corner:

Type: With flashings

☒ Horizontal walls long
☐ Vertical walls long
☐ This wall long
☐ This wall short

☐ **Right corner different**

Type: With flashings

☒ Horizontal walls long
☐ Vertical walls long
☐ This wall long
☐ This wall short

3.2 Flashing adjustments

- *Flashings vertical* sets type of flashing between the panels.
- *Bottom flashings* sets the bottom type.
- *Top flashings* sets the top type.
- *Corner settings* sets the flashings for corners and specifies which one of the walls extends to the outer corner.

4 Quantities

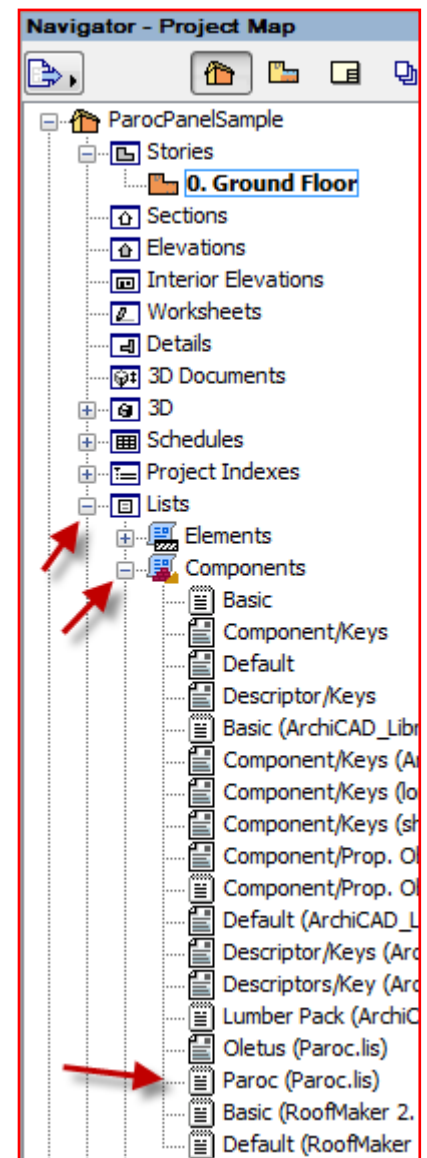
Number of wall and ceiling panels as well as flashings is calculated with Paroc listing.

Panel and corner flashing quantities are given in square meters. Vertical flashings, eaves and socket flashings are given in running meters.

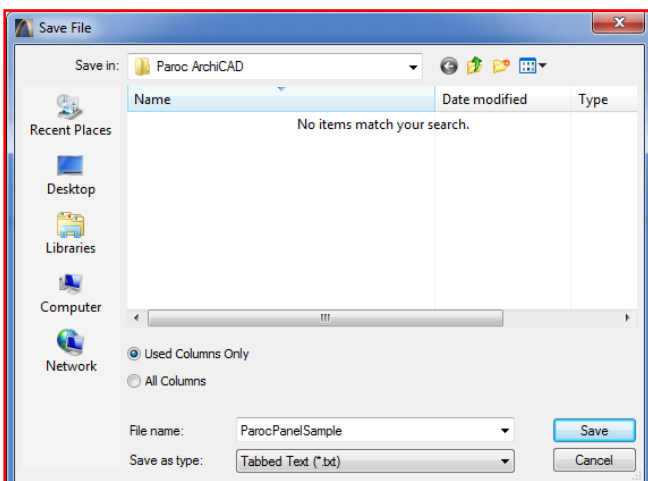
Panel quantities are calculated as gross area without excluding any openings. If panel is cut from any side, that cut is excluded from the area.

Surface type and colour shown in brackets in the list refer to internal or lower panel facing.

The list is saved from File -> Save As... Use tabbed text to open the file in Excel.



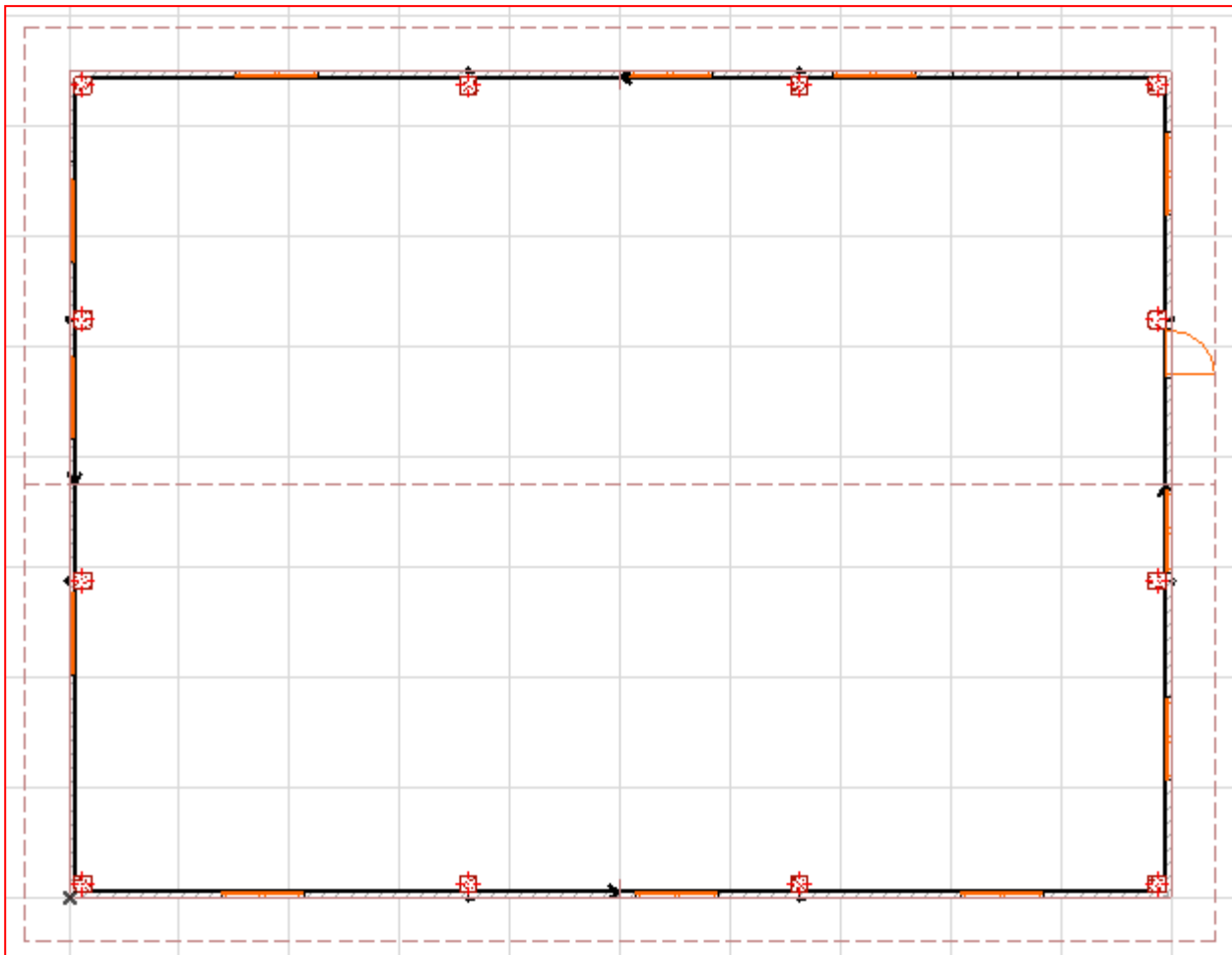
ParocPanelSample.pln / Components / Paroc(Paroc.lis)				
	Component Name	Component Quantity	Component Code	Component Unit Name
109	PAROC ASTO T 100 Smooth 0.5 PVDF RR11 (Smooth Polyester RR20)	254,805	Element	m2
18	PAROC Deco LF-3A PVDF RR22	61,400	Flashing	1m
18	PAROC Deco PVDF RR22	61,400	Flashing	1m
24	PAROC Eave flashing RR36	65,376	Eave flashing	1m
8	PAROC Flat PVDF RR22	7,622	Flashing	m2
31	PAROC Socket flashing RR26	75,252	Socket flashing	1m



5 Modelling instructions

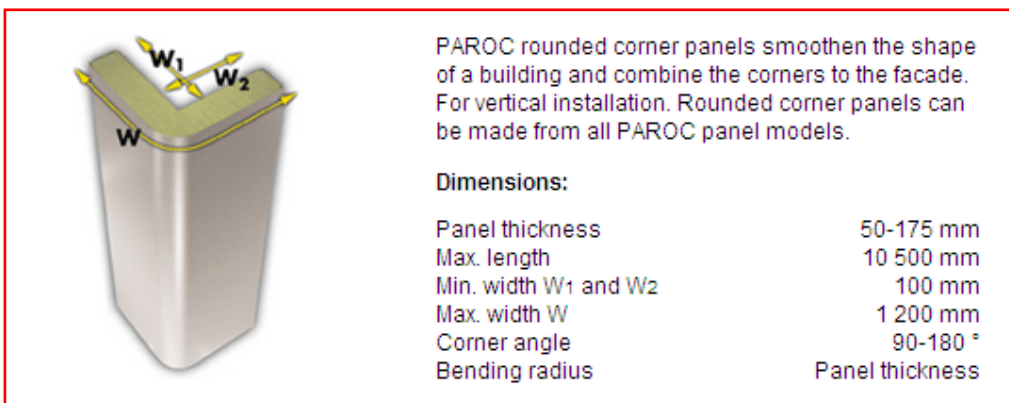
5.1 Vertical panel joints

Vertical panel joints are placed according to columns at the wall's interior side.

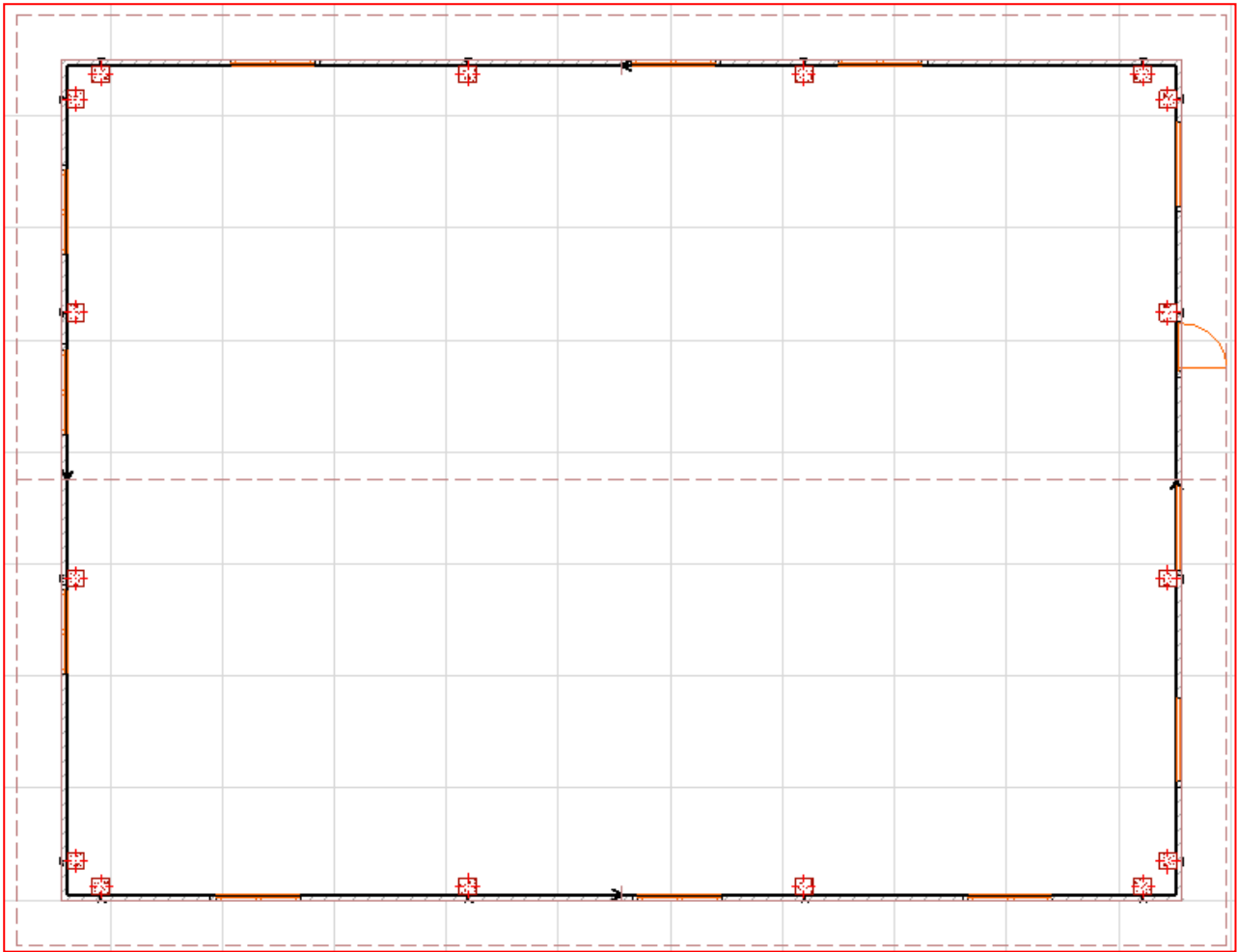


5.2 Round corners

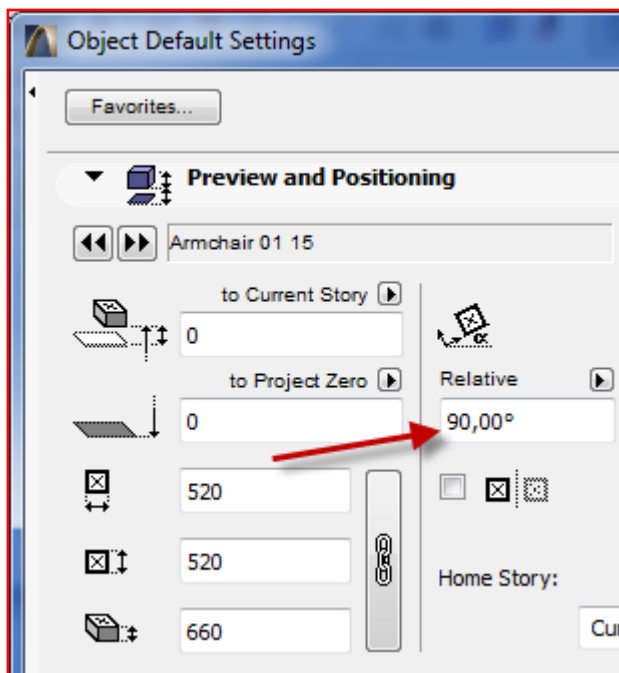
In round corners vertically installed PAROC rounded corner panels are used.



Columns have to be placed to suitable distance from the corners to keep dimensions W_1 and W_2 in limits.



5.3 Horizontal structures



Horizontal structures are created with ArchiCAD slab tool. Panel direction is set to object tool's default settings in *Object angle*. To edit angle, please recreate the panels for the slab.

6 Additional information

For additional information please contact Paroc Panel System and send an e-mail to panelinfo@paroc.com.