

EXPERIENCE  
**MORE**  
WOOD WOOL SOLUTIONS  
**Heradesign**®



# Knauf Ceiling Solutions

Complete ceiling and wall system solutions expertise from one market-leading brand.





## INTRODUCTION

---

- 04** Timeline
- 08** Acoustics
- 10** Sustainability
- 13** Product Properties
- 14** Case Studies
- 22** Colours

## PRODUCTS

---

- 25** Product Range Standard
- 30** Product Range A2
- 32** Product Range Plus
- 34** Accessories

## SYSTEMS

---

- 36** Baffles
- 38** Ceiling Rafts
- 39** Wall Absorbers
- 41** System S – Special System
- 42** System B – Screw Mounting
- 44** System C – Exposed System
- 45** System A – Concealed System
- 46** HERADESIGN® Creative
- 52** System Edges
- 54** Handling/Installation Guidelines



# 1935

# 1976

1908 1920 | 1940 1945 1950 1955 1960 1965 1970 1975 | 1980 1985 1990

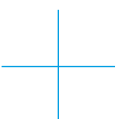


## Timelessly modern

### IN DEMAND WORLDWIDE

Success stories like the story of magnesite bonded wood wool panels are built on a clear vision, innovation and consistency. Introduced as a revolutionary building product in 1908, the wood wool panel has undergone a dramatic transformation.

With the first steps towards function and design, the path to becoming a revolutionary product began in 1935. From Japan to America, and Finland to South Africa, it was and still is an "eye-catcher" in many well-known, prestigious buildings. Highly functional and timelessly attractive, it has stood the test of changing architectural styles and functional requirements.



# 2005 2012

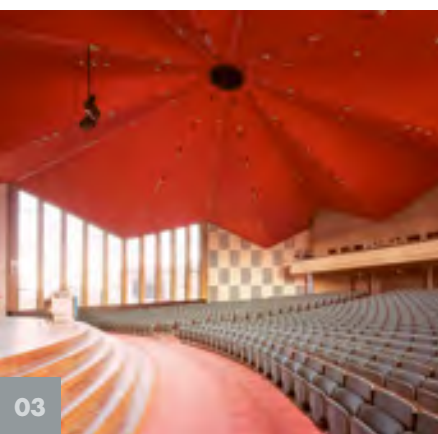
# 2019

1995 2000

2010 2011

2013 2014 2015 2016 2017 2018

2020 2021



**Heradesign.**

**“CREATIVE AND DIVERSELY  
UNCONVENTIONAL”**

This is what sustainable acoustics look like.  
The high-quality wood wool acoustic solution  
opens up an almost infinite variety of designs  
that make a crucial contribution to creating  
ecological and comfortable spaces.

This is recognised by the internationally  
renowned Cradle to Cradle Certified® Gold  
award for HERADESIGN® in colours natural  
and white.

- 01 Ajax Amsterdam Football Club Hall 1935
- 02 Airport Terminal Aruba Airport 1976
- 03 Erasmus University, Rotterdam, Netherlands
- 04 Rhein-Waal University
- 05 American International College, Kuwait,  
photo credits: © Matt Livey



01

# Wellbeing spaces







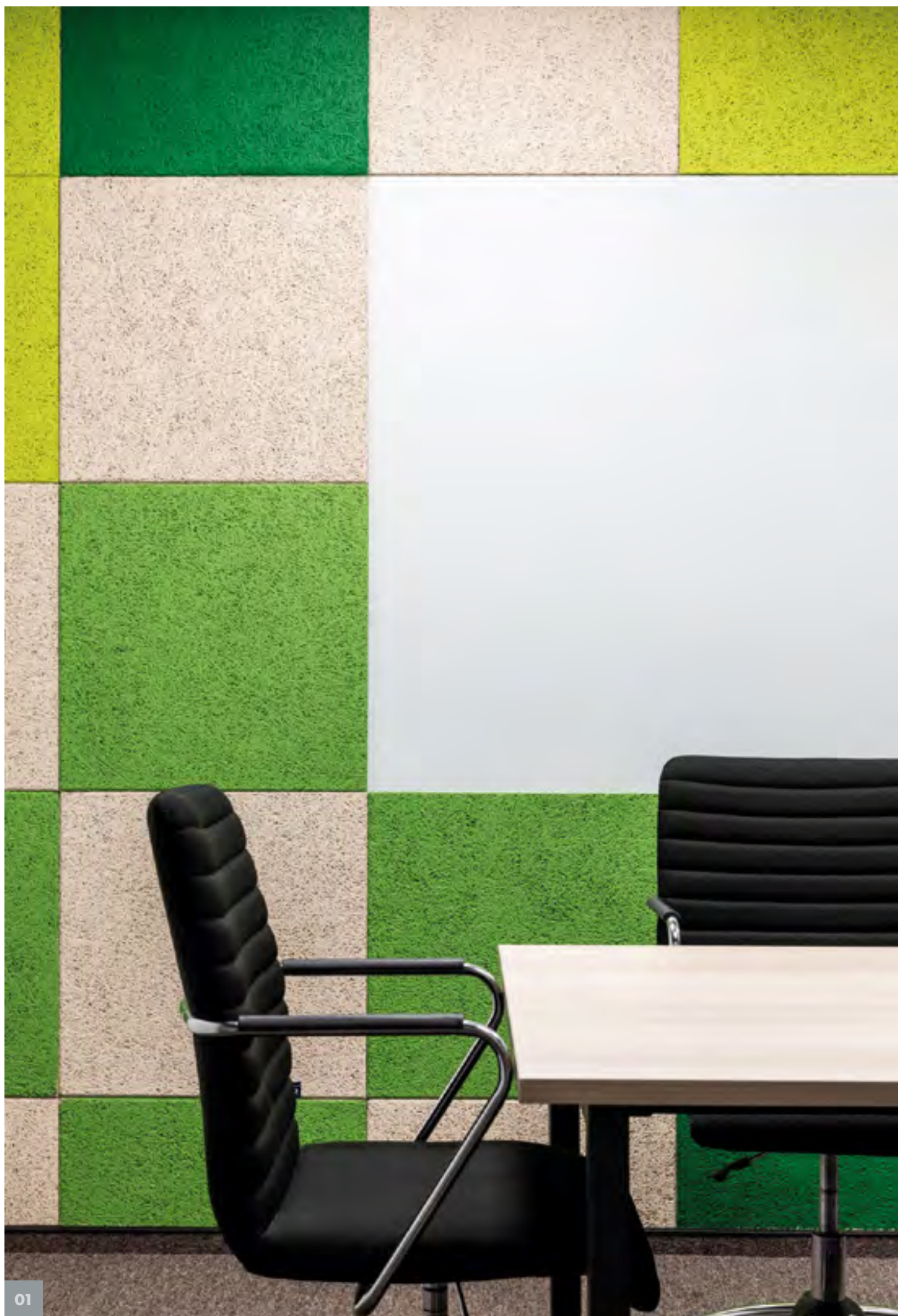
**01** Science Park Linz/Austria,  
photo credits: © H. Hurnaus,  
HERADESIGN® Fine

**02** Stubaier Glacier Station/Tirol,  
photo credits: © FOTOKUNST - haas & friends Ltd.,  
HERADESIGN® Fine

**THE DEMAND FOR POSITIVE AND COMFORTABLE ENVIRONMENTS IS HIGHER THAN EVER BEFORE. THIS IS A REAL CHALLENGE FOR ARCHITECTS, PLANNERS AND BUILDING OWNERS ALL OVER THE WORLD. IT IS OUR RESPONSIBILITY TO PROVIDE SOLUTIONS THAT ENABLE THEM TO FULFIL THIS CHALLENGE.**

High-quality and functional HERADESIGN® acoustic solutions are made from ecologically sound materials and are available in an almost unlimited variety of design options. With HERADESIGN®, we are making a conscious contribution to creating contemporary working and living spaces.

HERADESIGN®. What sustainable acoustics looks like.





01 Alpha Bank in Kiev, Ukraine,  
photo credits: © Sergiy Kadulin,  
HERADESIGN® Superfine

---

# Acoustics

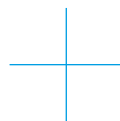
**ACOUSTIC SOLUTIONS FROM HERADESIGN®  
REDUCE ALL DISTURBING BACKGROUND NOISE.  
WELL ALMOST ALL, AS THERE CAN BE SOURCES  
OF NOISE THAT EVEN WE ARE POWERLESS  
TO CONTROL. NOT ALL DISTURBANCES ARE  
OBVIOUSLY ASSOCIATED WITH NOISE. FOR A  
PLEASANT, POSITIVE ROOM AMBIENCE IT IS  
NOT ONLY IMPORTANT WHAT WE HEAR, BUT  
IN PARTICULAR WHAT WE FEEL.**

HERADESIGN® has been dealing with the complexities of acoustics for decades. Besides the study of noise and acoustics, for us this means the development of sustainable, acoustically optimised solutions. Acoustics is one of the most important factors affecting the well-being and mood of people – even if they are not aware of it.

Under the product brand HERADESIGN®, Knauf Ceiling Solutions develops, produces and distributes high-quality, sustainable, wood wool, acoustic ceiling and wall systems. Unique and timeless, HERADESIGN® is available in a multitude of creative colours, shapes and sizes. The “warm” look and feel of the wood wool surface makes our products truly stand out from the rest. With a vast wealth of knowledge and decades of experience in delivering outstanding acoustical, sustainable solutions that improve occupant comfort and well-being in any space.

With HERADESIGN® relaxation and concentration can be achieved!

HERADESIGN® acoustic systems are the ideal solution for education, sports, office, infrastructure, entertainment and recreational facilities. In this product catalogue you can learn more about the variety of our products, their outstanding sound absorption performance and unique design options of HERADESIGN® acoustic solutions.





# “In the green zone”



BY USING HIGH-QUALITY RAW MATERIALS AND INNOVATIVE PRODUCTION TECHNOLOGIES, HERADESIGN® WOOD WOOL ACOUSTIC PANELS OFFER A MULTITUDE OF DESIGN POSSIBILITIES AND APPLICATIONS.

Thanks to their outstanding sound absorption and sustainable material design, HERADESIGN® acoustic solutions can make a major contribution to improving the ambience of a room. Enhancing well-being and, improving concentration, HERADESIGN® ceiling and walls can successfully increase the overall efficiency and performance of a space.

HERADESIGN® acoustic solutions are ecologically sound and completely safe with regards to building biology. Acoustics and design with a clear “green conscience”.

FSC®-certified products available on request.

01 Water World Langenhagen/Germany,  
photo credits: © David Matthiessen,  
HERADESIGN® Superfine

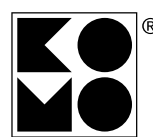
02 Water World Langenhagen/Germany,  
photo credits: © David Matthiessen,  
HERADESIGN® Superfine





In 2017, Knauf Ceiling Solutions developed a unique global process for the recovery of binders from wood wool panels at the production facility in Ferndorf, Austria. With the new binder recovery system (recalcination), the company has intensified the zero-waste process and the consequent entry into circular production of HERADESIGN® wood wool panels.

Since then, 4.000 tonnes of production residue from panel production have been fed back into the manufacturing process every year. Overall, with the recalcination plant, Knauf Ceiling Solutions not only lowers its own costs for purchasing binding agents, but also makes a significant contribution to climate protection. The (energy-intensive) production of one tonne of the binding agent magnesite produces one tonne of CO<sub>2</sub>. This results in a saving of 4.000 tonnes of CO<sub>2</sub> per year. In addition, the avoidance of material transport from the production facility to landfill results in over 600 fewer lorry journeys per year.



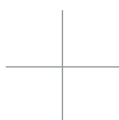


# Sustainable. Functional.

**WOOD, WATER AND MAGNESITE ARE THE PRINCIPAL COMPONENTS OF HERADESIGN® ACOUSTIC PANELS.**

This combination of materials is absolutely safe in terms of building biology. The magnesite-bonded wood wool panels from HERADESIGN® are natural products and meet today's sustainability trends.

HERADESIGN® acoustic panels can last more than 80 years in buildings. Should it be necessary, magnesite bonded wood wool panels can be disposed of easily or recycled.







### OPEN AND SMOOTH SURFACE TEXTURE

Only with the technologies and quality standards developed by HERADESIGN® is it possible to create open, smooth and lightweight surface textures with a simultaneously low quantity of binding agents. This unique structure gives the panels an exquisite and exclusive character and means they can be used in high-quality interior applications.



### DIMENSIONAL ACCURACY AND TOLERANCES

The sheet forming technology exclusive to HERADESIGN® means a standard thickness deviation of only +/- 1 mm.



### VARIETY OF EDGE DESIGNS

The production technology and binding agent make exact and high-quality edge designs compatible with almost all ceiling systems and profiles on the market.



### SOUND ABSORPTION

In addition to decorative applications in wall and ceiling constructions, HERADESIGN® acoustic panels can reach sound absorption values of up to 1.00  $\alpha_w$ .



### REACTION TO FIRE – NON-COMBUSTIBILITY (A2)

HERADESIGN® acoustic panels have a standard B-s1,d0 reaction to fire class. In addition, HERADESIGN® Superfine A2 and HERADESIGN® Fine A2 are available in reaction to fire class A2-s1,d0.



### HIGH MECHANICAL STRENGTH

Crash test with up to 85 km/h – HERADESIGN® acoustic panels pass the ball-impact test according to DIN 18032 and EN 13964 with flying colours! This is also a result of using magnesite as a binding agent, which guarantees both durable fibre elasticity and solidity.



### LONG LIFESPAN

Suitable for indoor conditions with relative air humidity of up to 90%. Magnesite protects the wood cells against ageing and destruction through fungal attack and microorganisms.



### HUMIDITY AND CLIMATE REGULATION

Magnesite is recognised as a hygroscopic and biologically sound binding agent. This means that in addition to their acoustic and decorative properties, HERADESIGN® acoustic panels also regulate room humidity and climate.



### LOW SHRINKAGE

HERADESIGN® acoustic panels are delivered with optimally balanced moisture content and will therefore shrink only 1 mm after installation. As a result, ceiling joints remain practically invisible.



### NATURE ON TREND

In addition to receiving the “building biology harmlessness” certificate (Institute for Building Biology in Rosenheim), HERADESIGN® has a sustainability and conservation policy regarding product technology and raw material use (EPD – AUB Environmental Product Declaration according to EN ISO 14025).



### HIGH-QUALITY AND SUSTAINABLE RAW MATERIALS

HERADESIGN® discovered the ideal binding agent for wood fibres. Magnesite protects the fibres and maintains their flexibility. Furthermore, only PEFC® certified and FSC® certified wood from sustainable Austrian forests is used for the manufacturing process.



### PRODUCT PORTFOLIO

HERADESIGN® is the only manufacturer of visible wood wool applications that also offers decorative sealed pored surfaces in addition to the classic fibre surfaces.

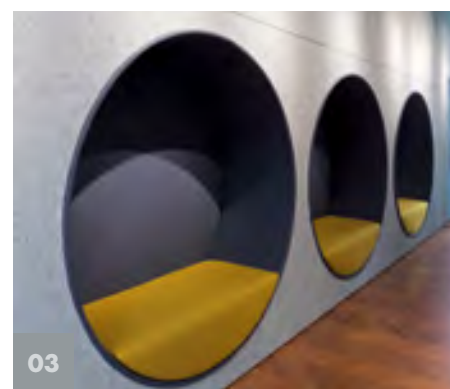


01

From sensual to exotic, classic to linear, extravagant to subtle: HERADESIGN®'s international case studies can be described in many ways. They all have one thing in common: they have all used a sophisticated product range which can adapt to different styles and demands worldwide.

Draw inspiration from a trip through a world of previously unimagined design possibilities.





**01** Bartle Bogle Hegarty London HQ, United Kingdom,  
HERADESIGN® Superfine

**02** Auditorium, University in Lublin, Poland,  
HERADESIGN® Superfine

**03** Archiproducts Office, Milan, Italy,  
HERADESIGN® Superfine

- 01** Sea Containers House, United Kingdom,  
HERADESIGN® Fine
- 02** Maier & Korduletsch, Vilshofen,  
Germany, HERADESIGN® Fine
- 03** ANTHILL Co-Working Space, Kiev,  
Ukraine, HERADESIGN® Fine
- 













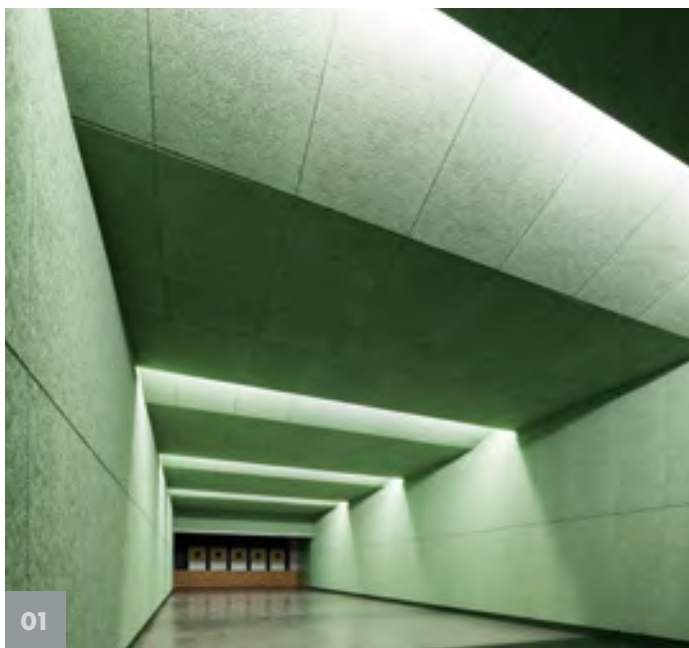
02

**01** Goerzwerk, Berlin, Germany,  
photo credits: ©Brigida González,  
HERADESIGN® Superfine

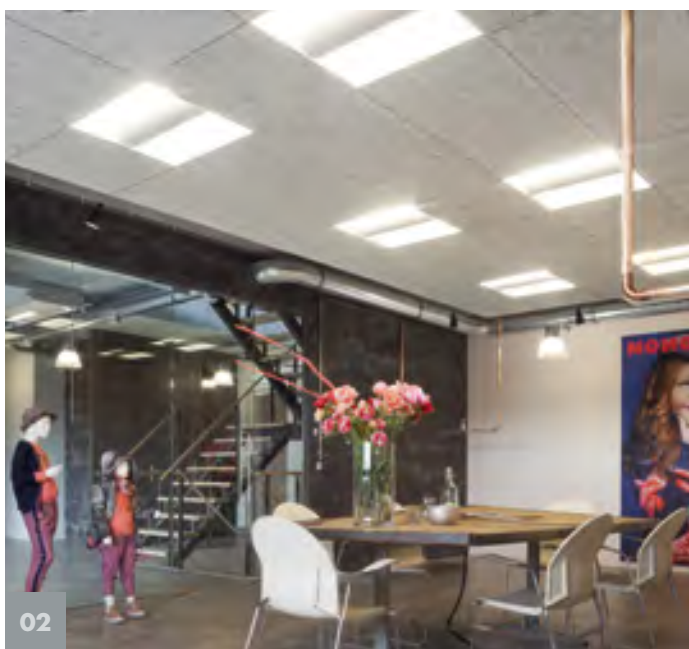
**02** Astarta Business Center, Kiev, Ukraine,  
HERADESIGN® Baffle basic

---





01



02



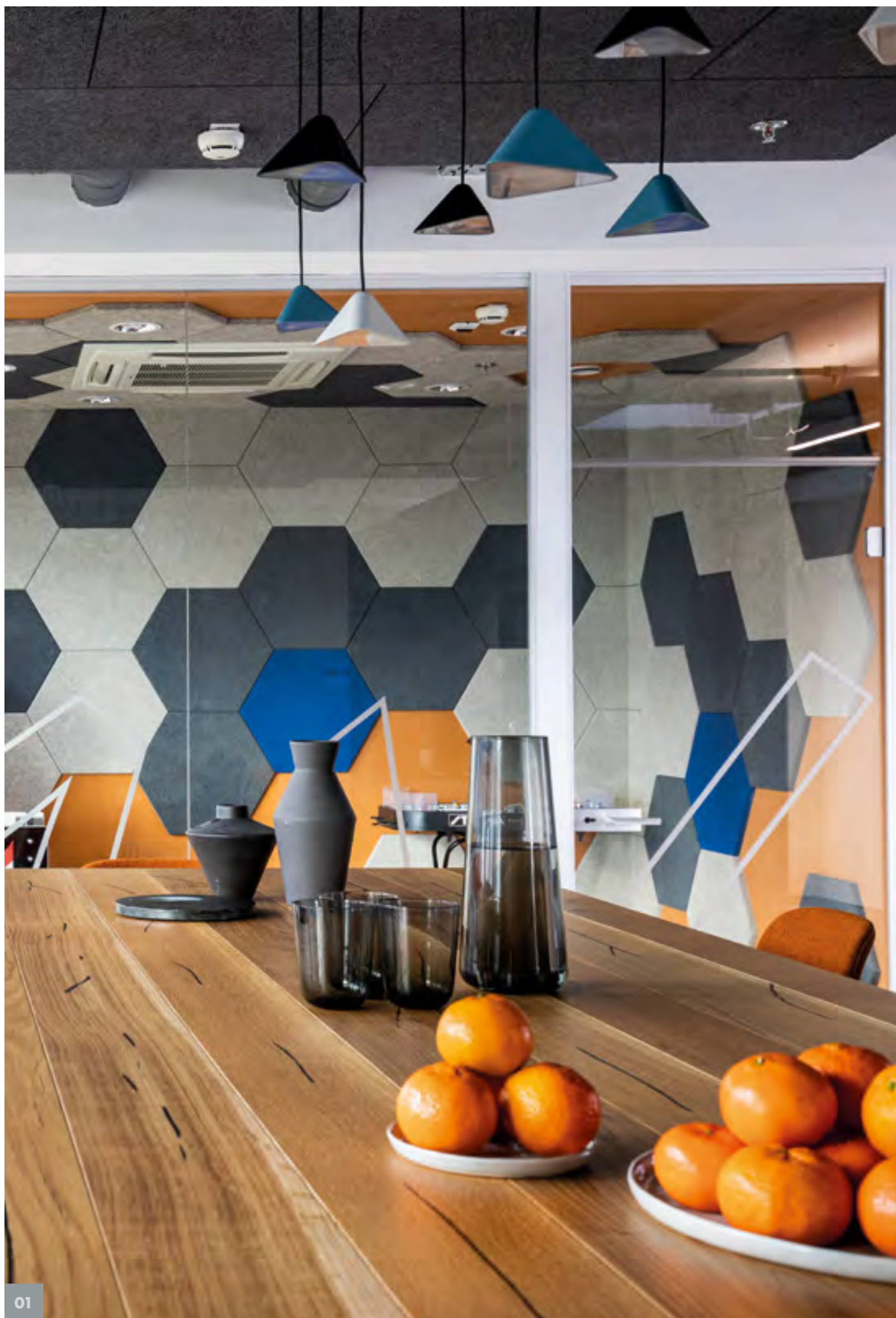
03

- 01** Shooting range HSG in Munich,  
Germany, HERADESIGN® Superfine
- 02** Showroom Jolo Fashion,  
The Netherlands, HERADESIGN® Fine
- 03** Maier & Korduletsch, Vilshofen,  
Germany, HERADESIGN® Fine

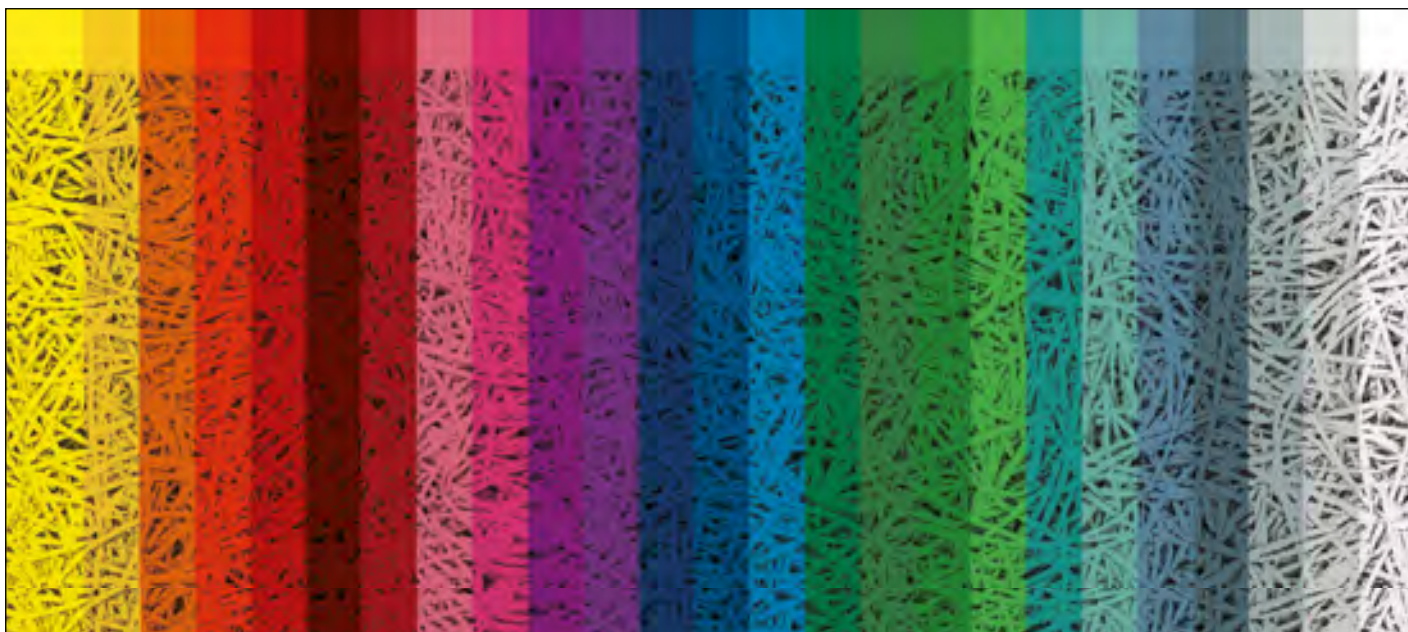




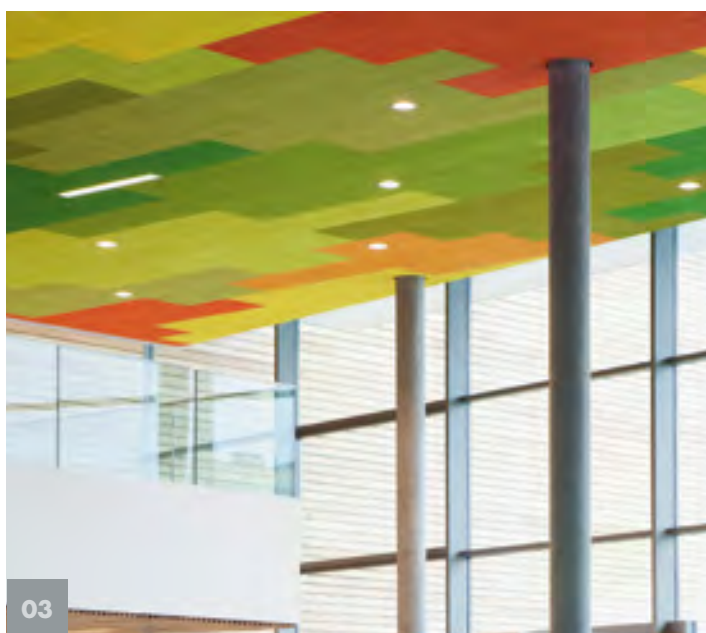








02



03

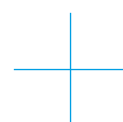
# Colours

- 01** SER Solutions, Pasching, Austria,  
photo credits: © Stefan Mayerhofer,  
HERADESIGN® Superfine
- 02** Hotel Rovinj, Croatia,  
HERADESIGN® Superfine
- 03** Therme Wien, Austria, 2011,  
photo credits: © Cathrine Stukhard,  
HERADESIGN® Superfine

It is not just the acoustic performance that is important to us – we also offer ceiling and wall solutions that look unique. The surface texture of the wood wool panels allows architects and designers to create inspiring and distinctive colour designs. An almost unlimited range of colours is available – you can choose almost any colour from popular colour systems such as RAL or NCS.

Dispersion paints and silicate paints based on potassium silicate and an organic binding agent are used to colour the HERADESIGN® acoustic panels in standard, pastel or solid colours. Pre-coloured screw heads in natural and white are available for the coloured panels.

We also offer the appropriate colour quality standard for applications in spa areas, indoor swimming pools etc.

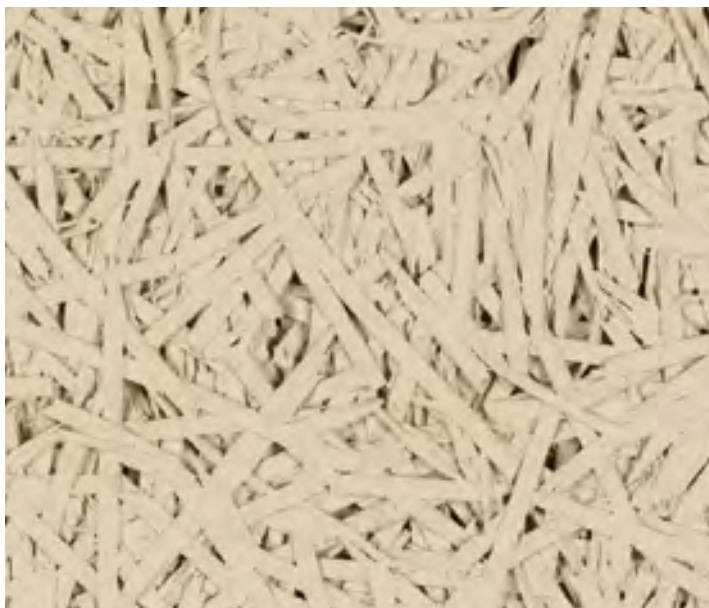




**01** AIC International College, Kuwait,  
photo credits: © Matt Livey, HERADESIGN® Creative



# Product Range Standard



## HERADESIGN® Macro

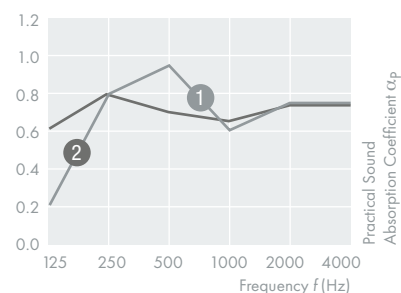
HERADESIGN® Macro is a single layer magnesite bonded wood wool acoustic ceiling and wall panel (fibre width approx. 3 mm).

- Unique surface texture
- Building biology recommended

### Product Range for HERADESIGN® Macro

Nominal size mm (other sizes on request)		600 x 600 mm
		1200 x 600 mm
Product thickness	One layer	25 mm
Weight kg/m <sup>2</sup>		12.4
Reaction to fire according to EN 13501-1: B-s1, d0		
Special sizes on request. Maximum length 2400 mm.		

### Sound Absorption Values



- HERADESIGN® Macro  
25 mm TCH 55 mm MW DP9 25 mm  
 $\alpha_w$  0.70 (LM) NRC = 0.75  
Sound Absorption Class C



with acoustic lining

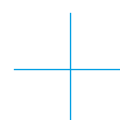
- HERADESIGN® Macro  
25 mm TCH 200 mm MW DP9 25 mm  
 $\alpha_w$  0.70 (L) NRC = 0.75  
Sound Absorption Class C



suspended with acoustic lining

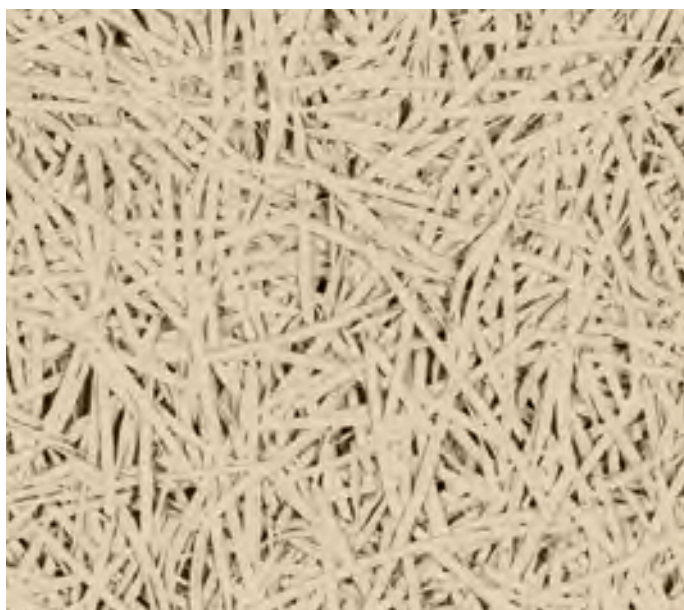


Extensive detailed information can be found at:  
[www.knaufceilingsolutions.com](http://www.knaufceilingsolutions.com)





# Product Range Standard



## HERADESIGN® Fine

HERADESIGN® Fine is a single layer magnesite bonded wood wool acoustic ceiling and wall panel (fibre width 2 mm).

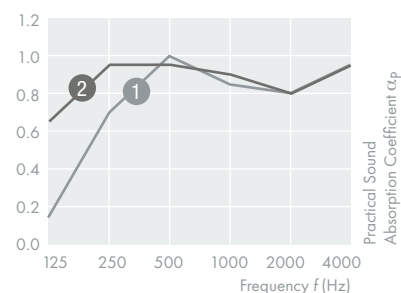
- Unique surface texture
- Building biology recommended
- Cradle to Cradle Certified® Gold\*

\*Cradle to Cradle Gold certified for white and natural colours only

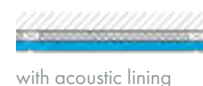
### Product range for HERADESIGN® Fine

Nominal size mm (other sizes on request)		600 x 600 mm
		625 x 625 mm
		1200 x 600 mm
		1250 x 625 mm
Product thickness	One layer	15 mm
		25 mm
		35 mm
Weight kg/m <sup>2</sup>	8.2 (15 mm)	
	13.3 (25 mm)	
	17.5 (35 mm)	
Reaction to fire according to EN 13501-1: B-s1, d0		
Special sizes on request. Maximum length 2400 mm.		

### Sound Absorption Values



- HERADESIGN® Fine  
25 mm TCH 55 mm MW DP9 25 mm  
 $\alpha_w$  0.85    NRC = 0.90  
Sound Absorption Class B



with acoustic lining

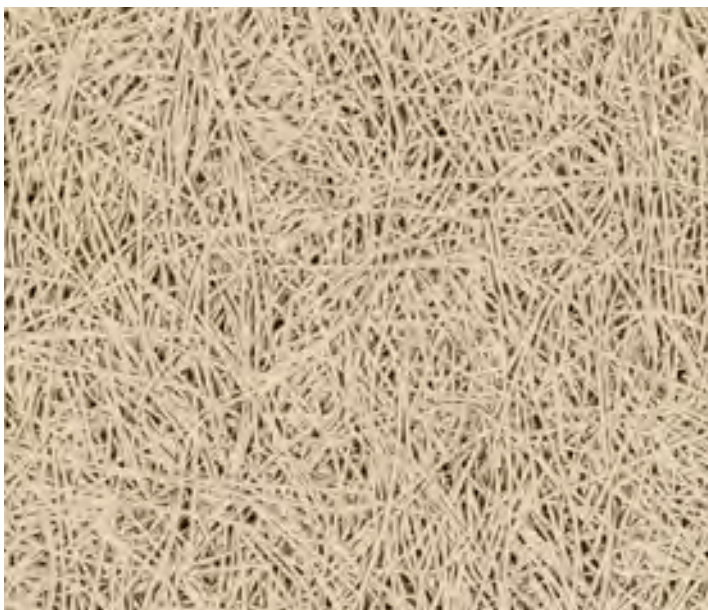
- HERADESIGN® Fine  
25 mm TCH 200 mm MW DP9 25 mm  
 $\alpha_w$  0.90 (L)    NRC = 0.90  
Sound Absorption Class A



suspended with acoustic lining



Extensive detailed information can be found at  
[www.knaufceilingsolutions.com](http://www.knaufceilingsolutions.com)



## HERADESIGN® Superfine

HERADESIGN® Superfine is a single layer magnesite bonded wood wool acoustic ceiling and wall panel (fibre width 1 mm).

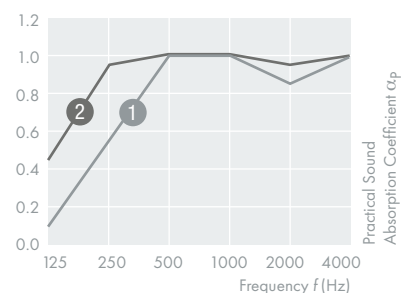
- Fine surface texture
- Building biology recommended
- Cradle to Cradle Certified® Gold\*

\*Cradle to Cradle Gold certified for white and natural colours only

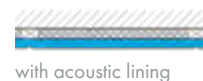
### Product range for HERADESIGN® Superfine

Nominal size mm (other sizes on request)		600 x 600 mm
		625 x 625 mm
		1200 x 600 mm
		1250 x 625 mm
Product thickness	One layer	15 mm
		25 mm
		35 mm
Weight kg/m²		7.8 (15 mm)
		12.6 (25 mm)
		16.5 (35 mm)
Reaction to fire according to EN 13501-1: B-s1, d0		
Special sizes on request. Maximum length 2400 mm.		

### Sound Absorption Values



- 1 HERADESIGN® Superfine  
25 mm TCH 55 mm MW DP9 25 mm  
 $\alpha_w$  0.85 (H) NRC = 0.85  
Sound Absorption Class B

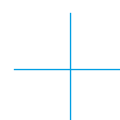


with acoustic lining

- 2 HERADESIGN® Superfine  
25 mm TCH 200 mm MW DP9 25 mm  
 $\alpha_w$  1.00 NRC = 1.00  
Sound Absorption Class A



suspended with acoustic lining





# Product Range Standard



## HERADESIGN® Micro

HERADESIGN® Micro is a single layer magnesite bonded wood wool acoustic ceiling and wall panel.

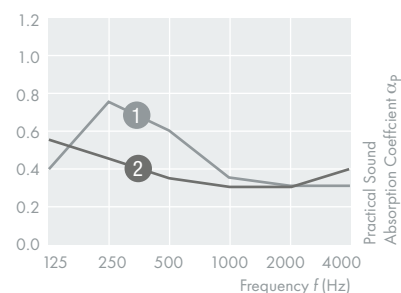
- Fine pored surface texture
- Building biology recommended
- Cradle to Cradle Certified® Gold\*

\*Cradle to Cradle Gold certified for white and natural colours only

### Product range for HERADESIGN® Micro

Nominal size mm (other sizes on request)		600 x 600 mm
		625 x 625 mm
		1200 x 600 mm
		1250 x 625 mm
Product thickness	One layer	25 mm
		35 mm
Weight kg/m <sup>2</sup>		15.0 (25 mm)
		19.0 (35 mm)
Reaction to fire according to EN 13501-1: B-s1, d0		
Special sizes on request. Maximum length 2400 mm.		

### Sound Absorption Values



- 1 HERADESIGN® Micro  
25 mm TCH 55 mm MW DP9  
 $\alpha_w$  0.35 (LM) NRC = 0.50  
Sound Absorption Class D



with acoustic lining

- 2 HERADESIGN® Micro  
25 mm TCH 200 mm MW DP9 25 mm  
 $\alpha_w$  0.35 (L) NRC = 0.35  
Sound Absorption Class D



suspended with acoustic lining



Extensive detailed information can be found at  
[www.knaufceilingsolutions.com](http://www.knaufceilingsolutions.com)



## HERADESIGN® Plano

HERADESIGN® Plano is a single layer magnesite bonded wood wool acoustic ceiling and wall panel.

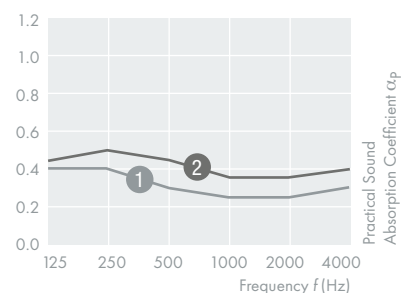
- Smooth surface texture
- Building biology recommended
- Cradle to Cradle Certified® Gold\*

\*Cradle to Cradle Gold certified for white and natural colours only

### Product range for HERADESIGN® Plano

Nominal size mm (other sizes on request)		600 x 600 mm
		1200 x 600 mm
Product thickness	One layer	25 mm
Weight kg/m <sup>2</sup>		15.0
Reaction to fire according to EN 13501-1: B-s1, d0		
Special sizes on request. Maximum length 2400 mm.		

### Sound Absorption Values



- 1 HERADESIGN® Plano  
25 mm TCH 55 mm MW DP9 25 mm  
 $\alpha_w$  0.3 (L)      NRC = 0.30  
Sound Absorption Class D

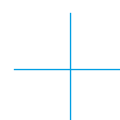


with acoustic lining

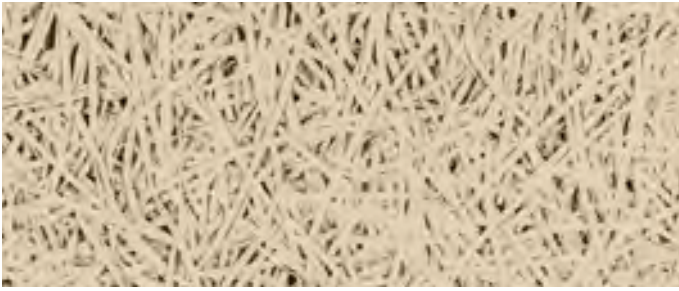
- 2 HERADESIGN® Plano  
25 mm TCH 225 mm MW DP9 25 mm  
 $\alpha_w$  0.40 (L)      NRC = 0.45  
Sound Absorption Class D



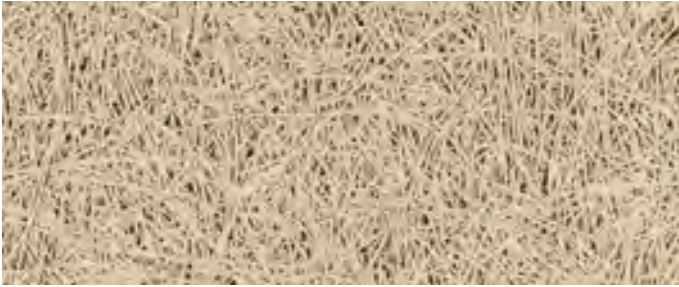
suspended with acoustic lining



# Product Range A2



HERADESIGN® Fine A2



HERADESIGN® Superfine A2



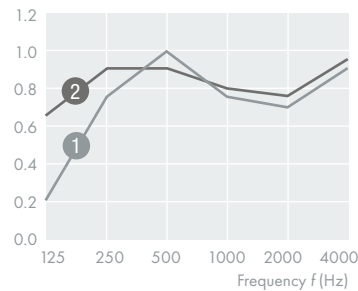
Acoustic panel for increased fire resistance.

- Non-combustible wood wool: acoustic panel with reaction to fire according to DIN-EN 13501-1: A2-s1, d0
- Excellent acoustic properties
- Building biology recommended

## Product range for HERADESIGN® Fine A2, Superfine A2

Nominal size mm (other sizes on request)		600 x 600 mm
		1200 x 600 mm
Product thickness	One layer	15 mm
		25 mm
Weight kg/m <sup>2</sup>	Fine A2	13.0 (15 mm)
		19.0 (25 mm)
	Superfine A2	12.0 (15 mm)
		18.0 (25 mm)
Reaction to fire according to EN 13501-1: A2-s1, d0		
Special sizes on request. Maximum length 2400 mm.		

## Sound Absorption Values



- 1 HERADESIGN® Fine A2  
25 mm TCH 55 mm MW DP9 25 mm  
 $\alpha_w$  0.75 (MH) NRC = 0.80  
Sound Absorption Class C

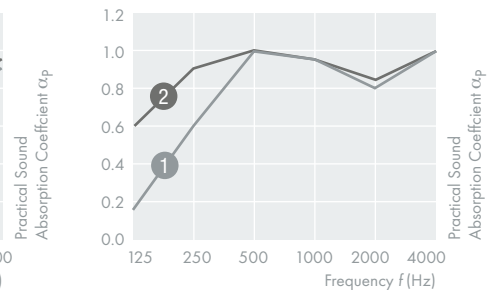


with acoustic lining

- 2 HERADESIGN® Fine A2  
25 mm TCH 200 mm MW DP9 25 mm  
 $\alpha_w$  0.80 (LH) NRC = 0.90  
Sound Absorption Class C



suspended with acoustic lining



- 1 HERADESIGN® Superfine A2  
25 mm TCH 55 mm MW DP9 25 mm  
 $\alpha_w$  0.85 (H) NRC = 0.90  
Sound Absorption Class B



with acoustic lining

- 2 HERADESIGN® Superfine A2  
25 mm TCH 200 mm MW DP9 25mm  
 $\alpha_w$  0.95 NRC = 0.95  
Sound Absorption Class A



suspended with acoustic lining



Extensive detailed information can be found at  
[www.knaufceilingsolutions.com](http://www.knaufceilingsolutions.com)





01

**01** Desert City, Madrid, Spain  
HERADESIGN® Fine

# Product Range Plus

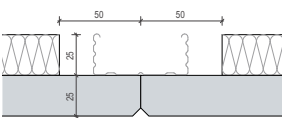
Wood wool acoustic panel.  
Available in the following surface textures:



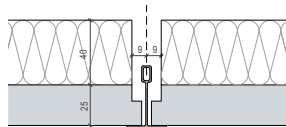
Composite product consisting of a magnesite bonded wood wool acoustic panel and a mineral wool absorber.

- Excellent sound absorption values
- Trickle protection
- Easier and faster installation

Available in the following edge designs:



AK-01 plus  
Thickness: 25 mm

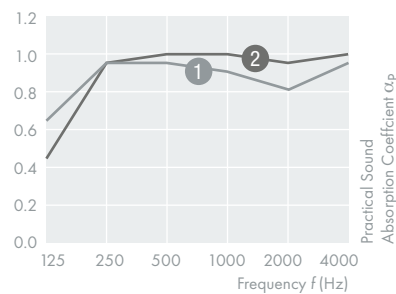


SK-04 plus  
Thickness: 25 mm

## Product Range Plus

Nominal size mm		1200 x 600 mm
Product thickness	Two layer	50 mm (25/25 mm)
		55 mm (15/40 mm)
		65 mm (25/40 mm)
Edge design		AK-01 plus (25/25 mm)
		SK-04 plus (15/40 mm)
		SK-04 plus (25/40 mm)
Weight kg/m <sup>2</sup>	Macro plus	14.7 (25/25 mm)
		16.0 (25/40 mm)
	Fine plus	15.6 (25/25 mm)
		11.8 (15/40 mm)
		16.9 (25/40 mm)
	Superfine plus	14.9 (25/25 mm)
		11.4 (15/40 mm)
		16.2 (25/40 mm)
	Micro plus Plano plus	17.3 (25/25 mm)
		18.6 (25/40 mm)
Reaction to fire according to EN 13501-1: B-s1, d0 Superfine plus and Fine plus also available in A2 quality		

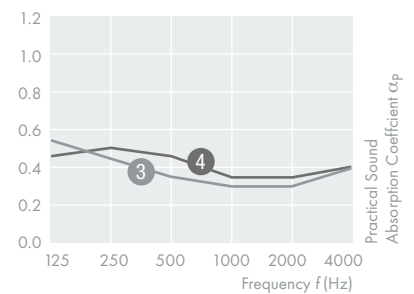
## Sound Absorption Values



- 1 HERADESIGN® Fine plus  
25+25 mm TCH 200 mm  
 $\alpha_w$  0.90 (L)   NRC = 0.90  
Sound Absorption Class A



suspended with acoustic lining



- 3 HERADESIGN® Micro plus  
25+25 mm TCH 200 mm  
 $\alpha_w$  0.35 (L)   NRC = 0.35  
Sound Absorption Class D



suspended with acoustic lining

- 2 HERADESIGN® Superfine plus  
25+25 mm TCH 200 mm  
 $\alpha_w$  1.00   NRC = 1.00  
Sound Absorption Class A



suspended with acoustic lining

- 4 HERADESIGN® Plano plus  
25+25 mm TCH 225 mm  
 $\alpha_w$  0.40 (L)   NRC = 0.45  
Sound Absorption Class D



suspended with acoustic lining



Extensive detailed information can be found at  
[www.knaufceilingsolutions.com](http://www.knaufceilingsolutions.com)

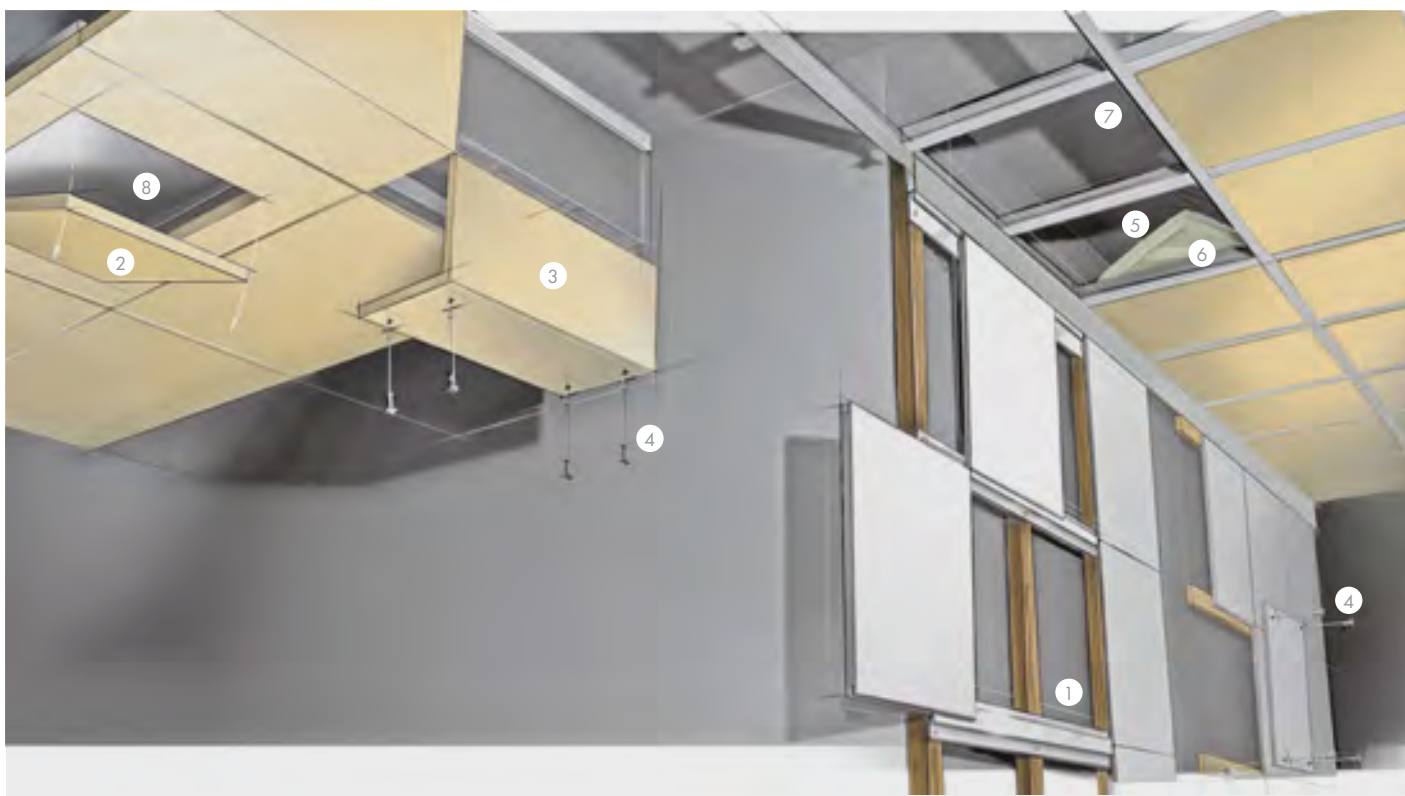




01

**01** Cirrus Logic, Edinburgh, United Kingdom  
photo credits: © McAteer Photograph  
HERADESIGN® Baffle basic





# Accessories

HERADESIGN® acoustic panels are high-quality wood wool panels that are delivered to site following careful packaging and quality control. However, other essential factors for a beautiful ceiling or wall include accurate handling and installation and suitable working conditions as well as the right accessories and system parts.

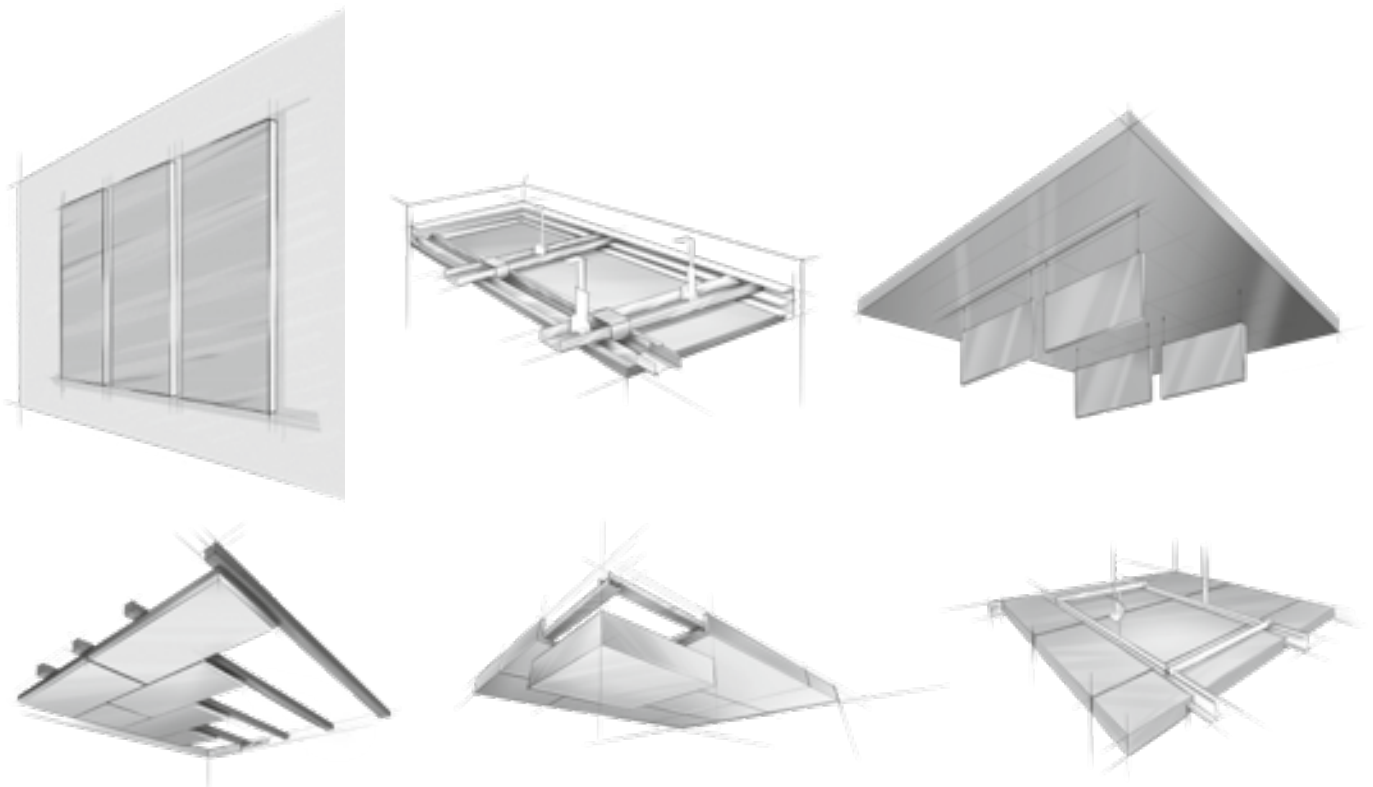
- ① HERADESIGN® holding profile
- ② HERADESIGN® maintenance opening for installation in ceiling structures
- ③ HERADESIGN® ceiling angle
- ④ HERADESIGN® screws
- ⑤ HERADESIGN® acoustic lining
- ⑥ HERADESIGN® PE trickle protection film bags for HERADESIGN® acoustic linings
- ⑦ HERADESIGN® grid system
- ⑧ HERADESIGN® fire protection box

HERADESIGN® Repair and covering spray for acoustic panels and screws from HERADESIGN® (not shown)

HERADESIGN® Bit holder (not shown)

HERADESIGN® Sonic profile (not shown)

HERADESIGN® LED lighting system (not shown)



# Systems

- Baffle
- Ceiling raft
- Wall absorber
- Installation with holding profiles
- Screw mounting onto wooden battens
- Screw mounting onto CD profiles
- Suspended ceiling with exposed T-profiles
- Suspended ceiling with concealed T-profiles
- HERADESIGN® Creative

**WE'LL FIND THE RIGHT ACOUSTIC SOLUTION  
FOR YOUR COMFORT AND WELL-BEING.**

Take advantage of the HERADESIGN® product applications and easy to install systems. Whether a ceiling or wall design, standard or special installation systems are available with sophisticated system accessories.







- 01** Rhein-Waal University in Kleve, Germany,  
HERADESIGN® Baffle aludesign superfine
- 02** Hoerbiger, Vienna, Austria,  
HERADESIGN® Baffle basic superfine
- 03** Partner Construction & Design, Kiev,  
Ukraine, HERADESIGN® Baffle plain fine
- 



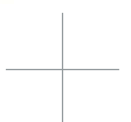
## Baffles – when the soffit remains visible

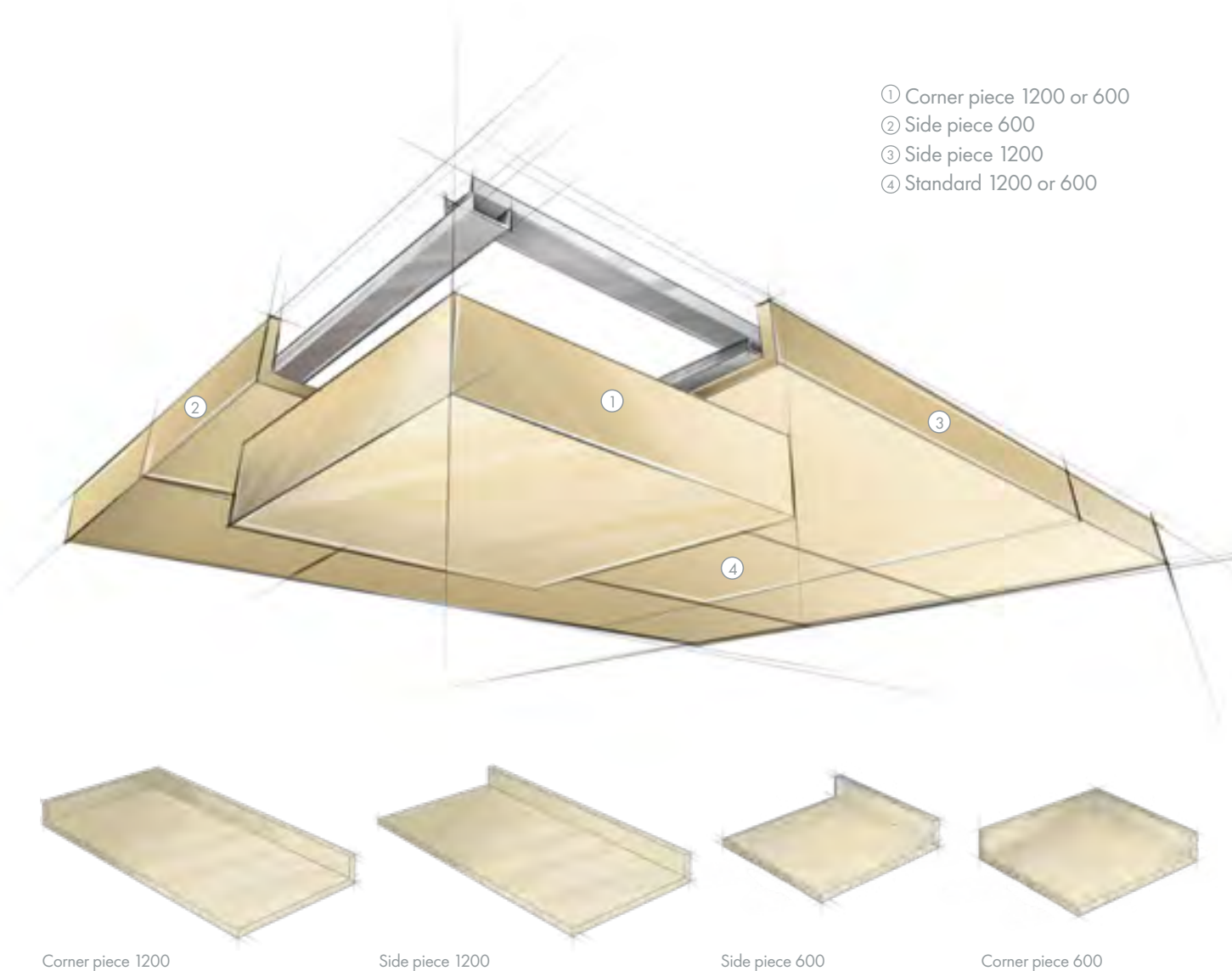
There are rooms that require acoustic optimisation, but it is not possible to utilise the entire ceiling. This may be due to buildings using concrete core activation or because of technical installations running along the soffit, or simply for architectural reasons. HERADESIGN® Baffles are the ideal solution for all these cases!

Baffles are individual two layer (HERADESIGN® Baffle basic and HERADESIGN® Baffle plain) or three layer (HERADESIGN® Baffle aludesign) acoustic modules.

Both types of HERADESIGN® Baffles have a wood wool acoustic cover layer on both sides. In contrast to the two layer model, the three layer Baffle has an additional mineral wool core. The combination of wood wool and mineral wool delivers outstanding absorption values in a wide frequency range. Thanks to their special shape, HERADESIGN® Baffles create unique design options, making them very popular acoustic design elements in schools, offices or public buildings.

- Targeted acoustic solutions for areas where the soffit is to remain visible
- Various sizes, surfaces and frame designs





## Ceiling Raft

HERADESIGN® Sonic modular ceiling rafts have been designed especially for large spaces where flexible room planning is required. The individual rafts provide excellent acoustic absorption and significantly improves speech intelligibility and concentration. However, ceiling rafts are more than simply acoustic solutions: the unique wood wool surface appearance makes them visually appealing and unique design possibilities can be achieved.

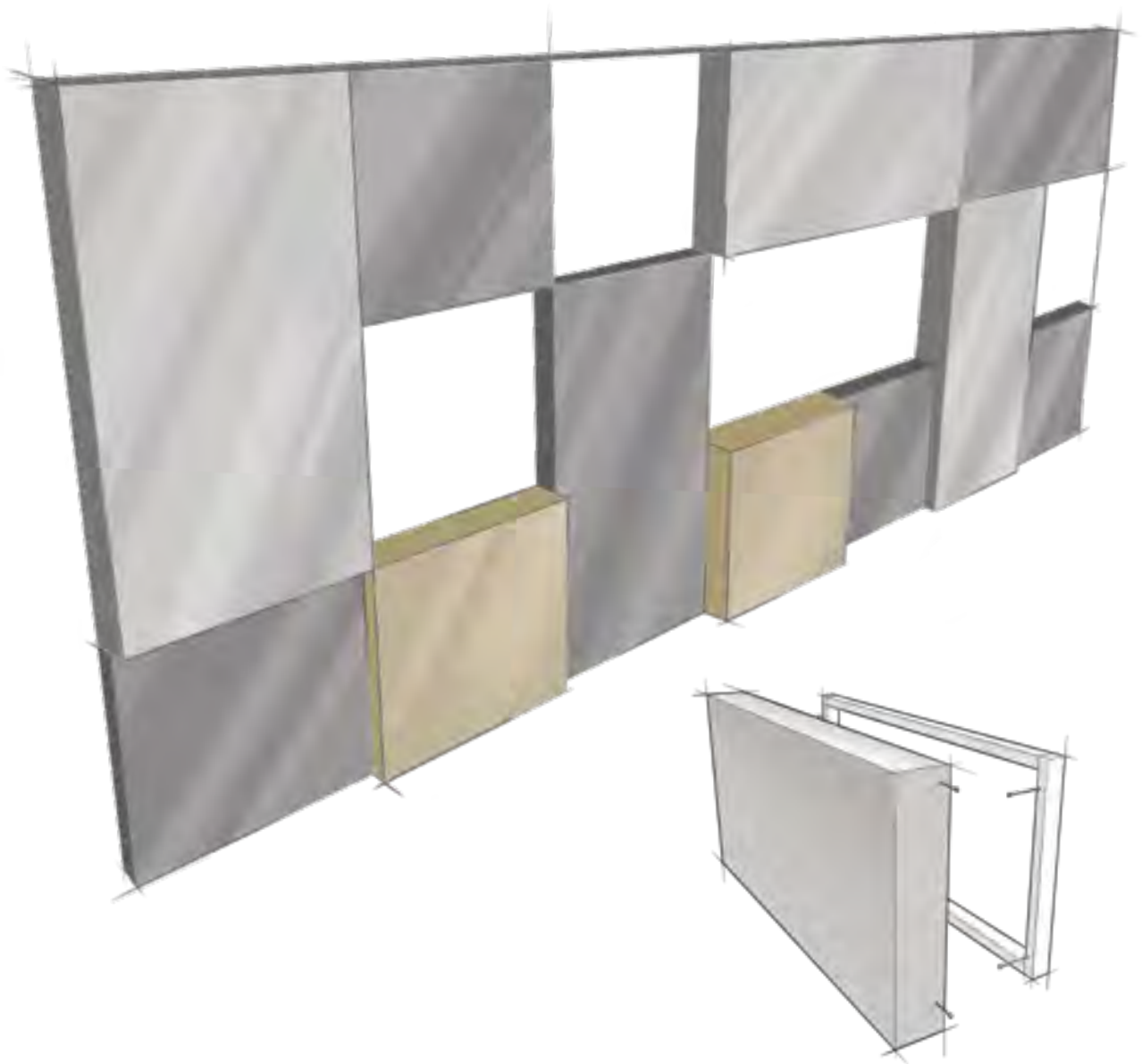
HERADESIGN® Sonic modular ceiling rafts offer optimum design flexibility and are an ideal retrofit solution to improve the acoustic and aesthetic performance of a space. Quick and easy to install, the acoustics and ambience in the room can be improved without the need to re-install or refurbish the whole ceiling. Furthermore, ceiling rafts enable segmentation of areas in the same room without having to erect dividing walls or partitions. This saves on time, costs and space.

- Individual acoustic optimisation
- Design possibilities
- Flexible application

Also available as a kit:  
 HERADESIGN® Sonic element  
 1200 x 1200 or 1200 x 2400





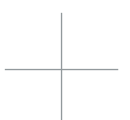


## Wall Absorber

For effective communications, ceilings must always be in harmony with the room acoustics. A feeling of privacy and tranquillity can only be achieved in well-designed, acoustic spaces. In some cases, the ceiling alone may not meet the necessary acoustic performance requirements. In this instance, we recommend the use of highly effective and flexible wall absorbers which can be easily adapted to meet the acoustic requirements of a space.

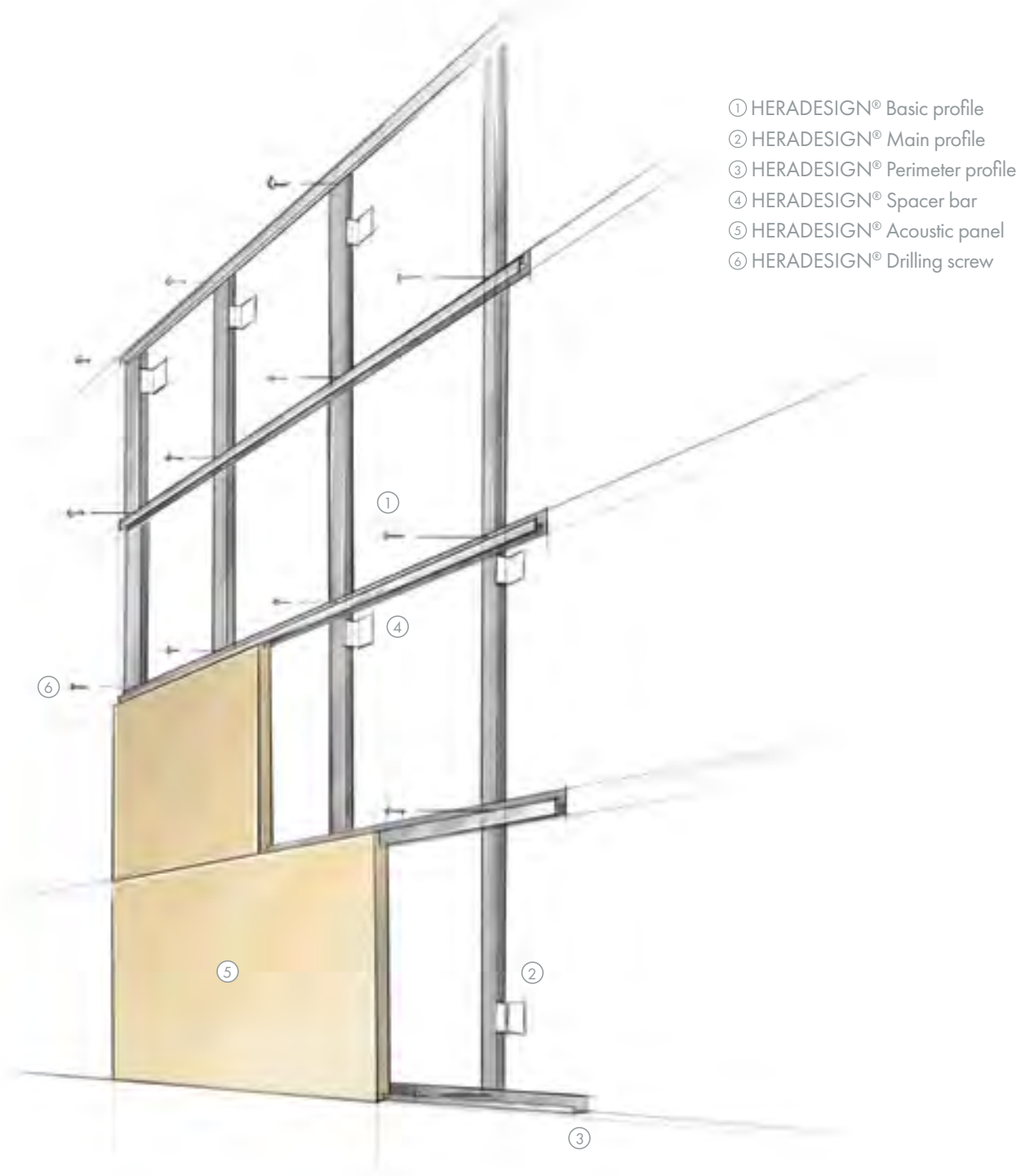
The HERADESIGN® wall absorber is an acoustically effective wall panel made of magnesite-bonded wood wool panels with an adhered acoustic lining. The wall absorber is delivered in one piece ready for installation and can be installed quickly and in any position on a stable vertical surface with the enclosed wooden frame.

- Wood wool absorber element with concealed wooden installation frame
- Surface designs HERADESIGN® Superfine and Fine
- Colour of choice from RAL, NCS etc.
- Completely pre-fabricated and delivered ready for installation
- Individual installation (portrait, landscape, diagonal)







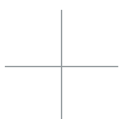


## System S – Special Systems

### System S 2.1 Installation with holding profiles

It is not only the ceiling that makes a room perfect; you can give a room a special effect by mounting an acoustic wall solution. Take advantage of the many applications of HERADESIGN® products and their respective installation systems.

- Easy and quick installation thanks to coordinated system components
- For installation on walls and ceilings
- High stability due to continuous main and perimeter profiles
- Aluminium holding profiles for high-quality concealed systems





## System B – Screw mounting

### System B 2.1 Screw mounting onto wooden battens



Ball impact resistant version with  
25 mm and 35 mm panel thickness



Extensive detailed information regarding system constructions, installation  
and documents can be found at [www.knaufceilingsolutions.com](http://www.knaufceilingsolutions.com)

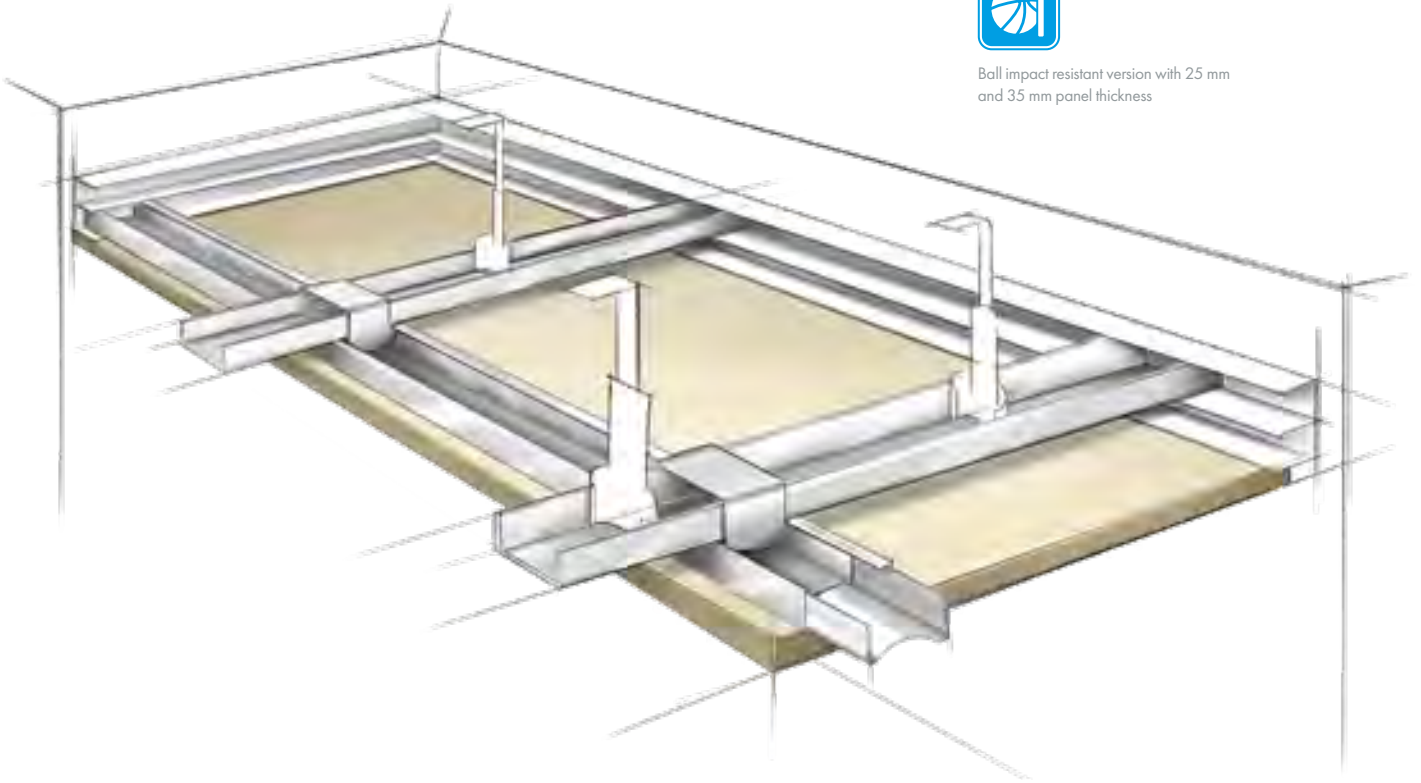
**01** Taipei Physical Education College,  
Taiwan, HERADESIGN® Superfine

# System B – Screw mounting

## System B 2.2 Screw mounting onto CD profiles



Ball impact resistant version with 25 mm and 35 mm panel thickness



### TECHNICAL NOTES (FOR BOTH INSTALLATION METHODS):

Impact resistant design for ceilings and walls according to DIN 18023 / part 3 or EN 13964, Annex D:

- At least 3 screws per panel width and support
- Max. distance of screws: <315 mm

Centre distances: Main batten/profile 600/625 mm  
Cross batten/profile 900 mm

Nonius hanger: 900 mm

Minimum profile section:

Wood:  $\geq 60/30$  mm

Metal: CD 60/27/0.6 mm

Recommended panel thickness: 25 mm for ceilings, 35 mm for walls (Except: Product Range A2).

HERADESIGN® Plus products are available with AK-01 edge design.

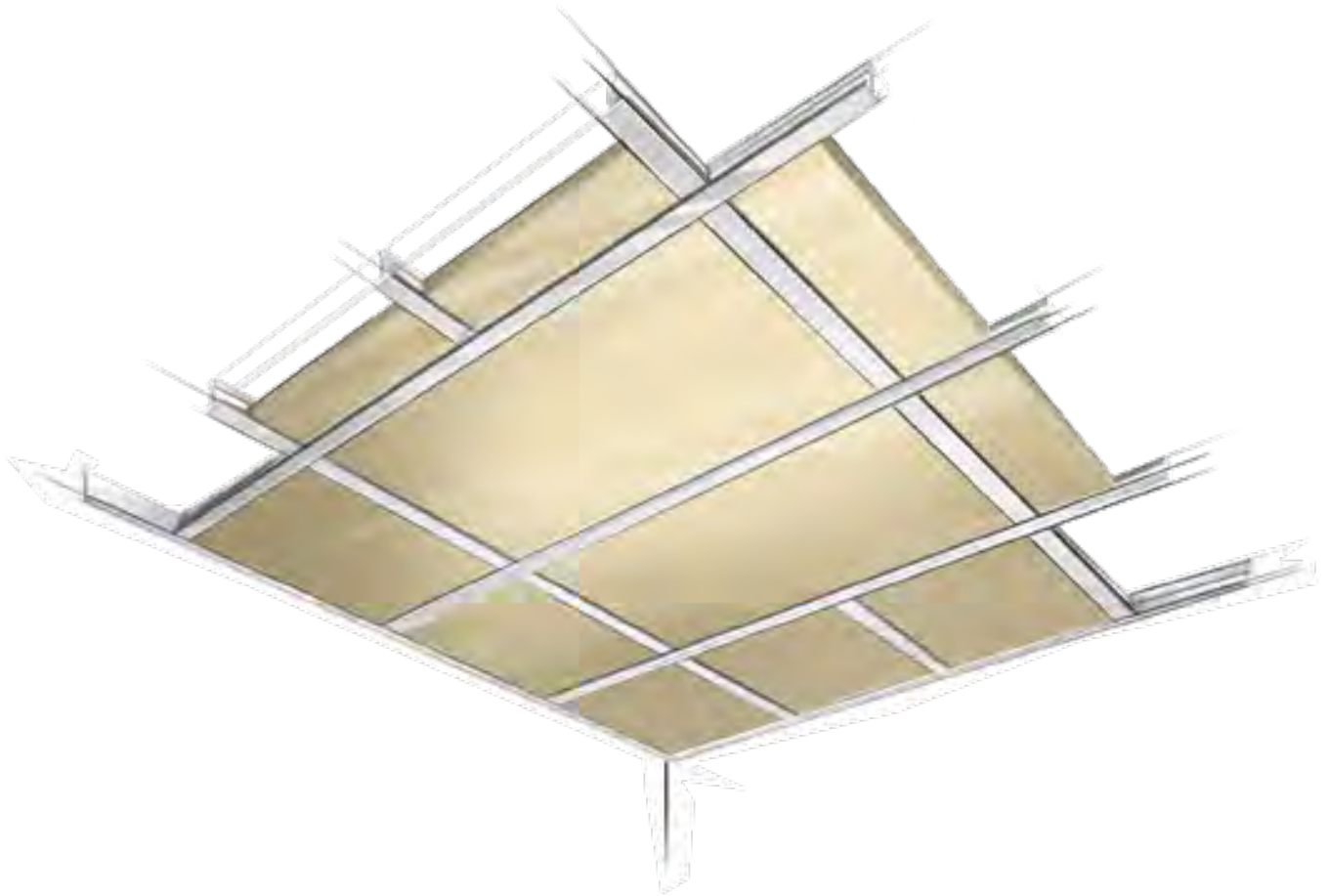
Test certificates for various requirements are available on request (e.g. impact resistance).





# System C – Exposed Systems

## System C 2.1 – Suspended Ceilings with exposed T-profiles



### TECHNICAL NOTES:

15 mm thick products are only available as standard in 600/600 or 625/625 mm.

The panel dimensions are smaller than the grid dimensions, grid width  $\geq 24$  mm.

The SK-04 edge design in 25 and 35 mm thickness, is undercut on the back.

A fire protection design is possible in EI 30.

Minimum suspension heights should be considered.

HERADESIGN® Plus products are available with SK-04 edge design.

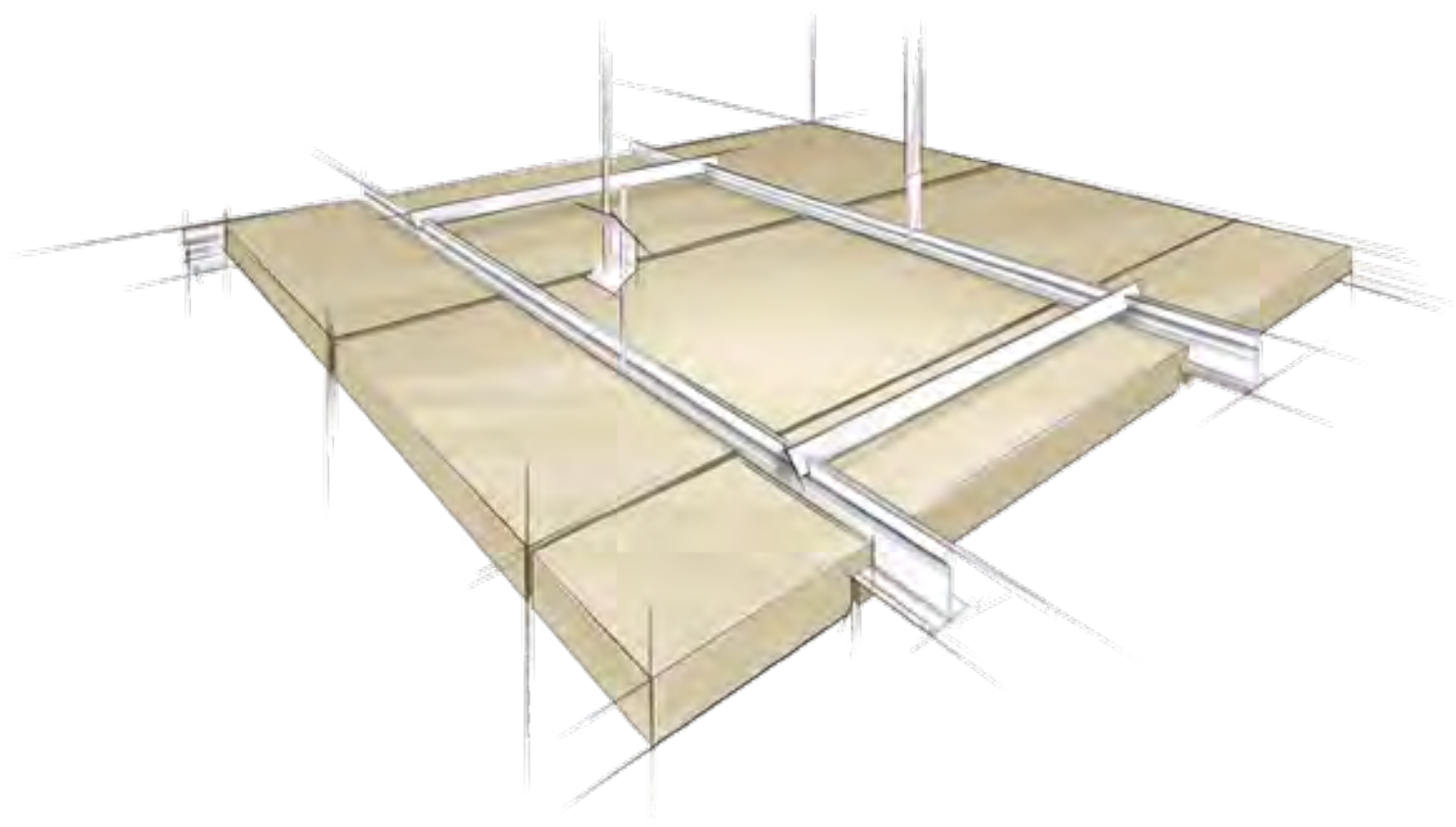


Would you like to know more about AMF VENTATEC®?  
If you have any questions regarding the application and choice of system, please contact your local representative.  
Further information about AMF VENTATEC® can be found at [www.knaufceilingssolutions.com](http://www.knaufceilingssolutions.com)

Knauf Ceiling Solutions is not a full system provider in terms of DIN-EN 13964

# System A – Concealed Systems

## System A 2.1 and 2.2 Suspended Ceilings with concealed T-profiles



### TECHNICAL NOTES:

Suspended ceilings with T-profiles T35/38 for example, DONN® DX35.

Spacer bars must be used to cross brace the system – max. 1200 mm centres.

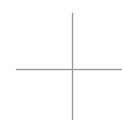
System A 2.1 slide-in – non-accessible, Edge VK-09 available in 25 and 35 mm thickness.

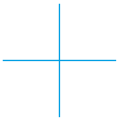
System A 2.2 every other panel can be demounted (35 mm panel thickness) due to VK-10 and VK 10/5 edge design.

Panels are only available for 600 mm grid dimensions.



Would you like to find out more about DONN®?  
Further information about DONN® grid systems can be found at  
[www.knaufceilingsolutions.com](http://www.knaufceilingsolutions.com)





## HERADESIGN® Creative: One hundred percent fantasy, inspiration and temptation

With a unique combination of creativity, aesthetics, individuality, ecology and quality – HERADESIGN® Creative allows you to bring the beauty of nature into your ceiling designs – just imagine what you could achieve!

HERADESIGN® Creative is available in a variety of designs and gives you the freedom to realize bigger and more unique project designs.

- HERADESIGN® Creative module
  - predefined shapes
  - combine or create stand-alone designs
- HERADESIGN® Creative line
  - milled geometric patterns on the panel surface
  - combine or create endless patterns
- HERADESIGN® Creative effect
  - milled grooves
  - can create endless patterns
  - unique combination of wood wool surface with HERADESIGN® Micro fine pored surface texture
- Surfaces HERADESIGN® Creative project
  - bespoke creative designs for architects and designers
- Colour of your choice, RAL, NCS etc.
- Ecologically sound product made from renewable raw materials
- Unlimited design options

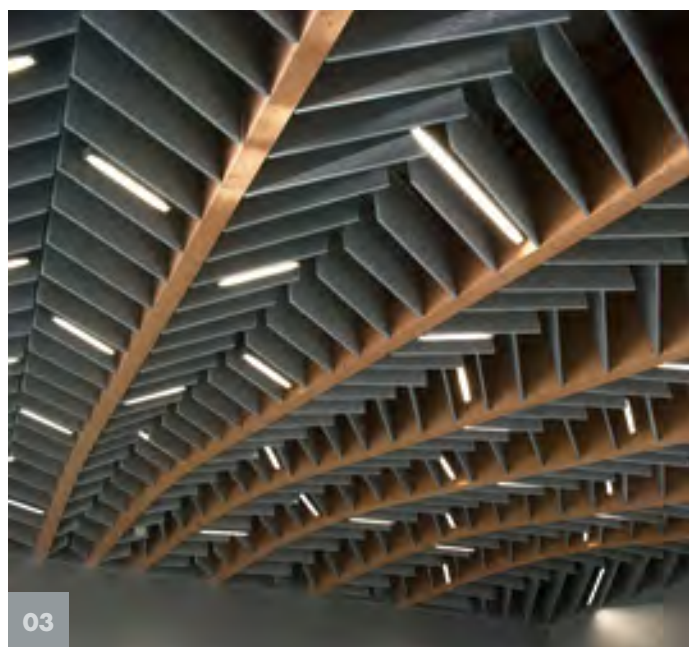












- 01** Coworking Space "Share Square", Belgrade, Serbia, HERADESIGN® Superfine
- 02** Restaurant Waku Waku, Germany, HERADESIGN® Superfine
- 03** Auditorium, University in Lublin, Poland, HERADESIGN® Baffle basic superfine





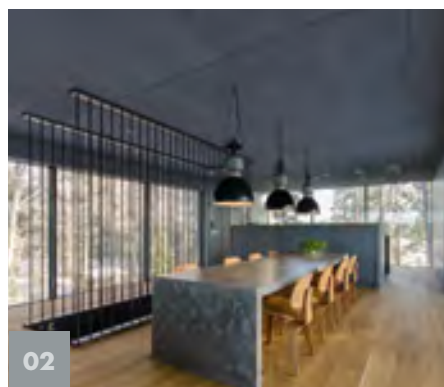


**01** University of Technology, Sydney, Australia,  
HERADESIGN® Superfine

**02** Villa Turku, Finland, AK-02/5

**03** Stabilo Cube, Germany, SY-03

---



**02**



**03**

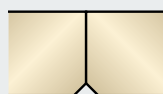
## System B



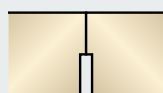
GK



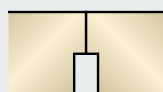
AK-00



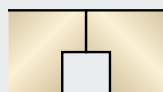
AK-01



AK-02/5



AK-02/10

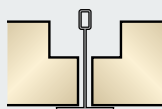


AK-02/20

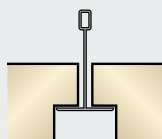


AK-03

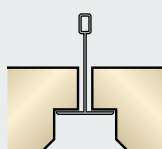
## System C



SK-04

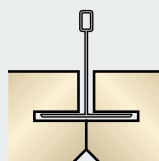


SK-05

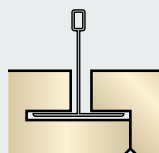


SK-06

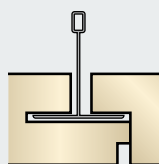
## System A



VK-09

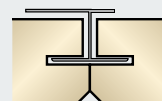


VK-10



VK-10/5

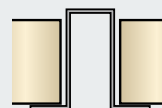
## System S



SY-02



SY-03



SK-08

## System Edges

HERADESIGN® acoustic panels can be supplied with different edge designs to correspond to the architectural concept and the planned installation type.

HERADESIGN® acoustic panels can therefore be used with almost all common suspension systems and installation methods.



Abbreviation	Design	Edge description	HERADESIGN® Macro <sup>6)</sup>				HERADESIGN® Fine				HERADESIGN® Superfine				HERADESIGN® Micro				HERADESIGN® Plano <sup>6) 8)</sup>				HERADESIGN® Fine A2				HERADESIGN® Superfine A2				Recommended profile width <sup>7)</sup>	Notes	Grid dimensions <sup>2)</sup>	Panel dimensions
			System B				25	15	25	35	15	25	35	25	35	25	35	25	15	25	15	25	15	25	mm		L/W (mm)		L/W (mm)					
	System edges: screw mounting																																	
GK		Straight edge on all sides	•	•	•	•	•	•	•	•	•	•	•	•	•	•	•	•	•	•	•	•	•	•	•	•	•	60	1) 3)	600/600 625/625 1200/600 1250/625	600/600 625/625 1200/600 1250/625			
AK-00		Bevelled on long sides, 5 mm bevel, straight edge on the face side	•	•	•	•	•	•	•	•	•	•	•	•	•	•	•	•	•	•	•	•	•	•	•	•	•	60	3)	600/600 625/625 1200/600 1250/625	600/600 625/625 1200/600 1250/625			
AK-01		Bevelled edge on all sides, 5 mm bevel	•	•	•	•	•	•	•	•	•	•	•	•	•	•	•	•	•	•	•	•	•	•	•	•	•	60	3)	600/600 625/625 1200/600 1250/625	600/600 625/625 1200/600 1250/625			
AK-02 /5		Straight edge with shiplap on all sides, 5 mm joint width	•	–	•	•	–	•	•	•	•	•	•	•	•	•	•	•	•	•	•	•	•	•	•	•	•	60	3)	600/600 625/625 1200/600 1250/625	600/600 625/625 1200/600 1250/625			
AK-02 /10		Straight edge with shiplap on all sides, 10 mm joint width	•	–	•	•	–	•	•	•	•	•	•	•	•	•	•	•	•	•	•	•	•	•	•	•	•	60	3)	600/600 625/625 1200/600 1250/625	600/600 625/625 1200/600 1250/625			
AK-02 /20		Straight edge with shiplap on all sides, 20 mm joint width	•	–	•	•	–	•	•	•	•	•	•	•	•	•	•	•	•	•	•	•	•	•	•	•	•	60	3)	600/600 625/625 1200/600 1250/625	600/600 625/625 1200/600 1250/625			
AK-03		Shiplap on all sides with bevelled edge, 5 mm bevel, 20 mm joint width	•	–	•	•	–	•	•	•	•	•	•	•	•	•	•	•	•	•	•	•	•	•	•	•	•	60	3)	600/600 625/625 1200/600 1250/625	600/600 625/625 1200/600 1250/625			
System edges: HERADESIGN® T-grid system 24/38 – (exposed profiles) lay-in installation																																		
System C			25	15	25	35	15	25	35	25	35	25	35	25	15	25	15	25	25	15	25	15	25	mm			L/B (mm)		L/B (mm)					
SK-04		Straight edge on all sides	•	•	•	•	•	•	•	•	•	•	•	•	•	•	•	•	•	•	•	•	•	•	•	•	•	24	2) 4)	600/600 625/625 1200/600 1250/625	594/594 619/619 1194/594 1244/619			
SK-05		Straight edge with shiplap on all sides	•	–	•	•	–	•	•	•	•	•	•	•	•	•	•	•	•	•	•	•	•	•	•	•	•	24	2) 4)	600/600 625/625 1200/600 1250/625	594/594 619/619 1194/594 1244/619			
SK-06		Shiplap on all sides with bevelled edge, 5 mm bevel	•	–	•	•	–	•	•	•	•	•	•	•	•	•	•	•	•	•	•	•	•	•	•	•	•	24	2) 4)	600/600 625/625 1200/600 1250/625	594/594 619/619 1194/594 1244/619			
System edges: HERADESIGN® T-grid system 35/38 – (concealed profiles) slide-in installation																																		
System A			25	15	25	35	15	25	35	25	35	25	35	25	15	25	15	25	25	15	25	15	25	mm			L/B (mm)		L/B (mm)					
VK-09		Grooved and bevelled on all sides, 5 mm bevel Note: The system is not demountable.	•	–	•	•	–	•	•	•	•	•	•	•	•	•	•	•	•	•	•	•	•	•	•	•	•	35	3) 5)	600/600 1200/600	600/600 1200/600			
VK-10		Grooved on long sides and bevelled on all sides, 5 mm bevel Note: The system is demountable.	–	–	–	•	–	–	•	–	•	–	•	–	–	–	–	–	–	–	–	–	–	•	•	•	35	2) 3) 5)	600/600 1200/600	600/615 1200/615				
VK-10 /5		Grooved on long sides and straight edge on all sides with 5 mm joint all round Note: The system is demountable.	–	–	–	•	–	–	•	–	•	–	•	–	–	–	–	–	–	–	–	•	•	•	•	•	35	2) 3) 5)	600/600 1200/600	600/615 1200/615				
System edges: Special installation (special profiles)																																		
System S			25	15	25	35	15	25	35	25	35	25	35	25	15	25	15	25	25	15	25	15	25	mm			L/B (mm)		L/B (mm)					
SY-02		For HERADESIGN® holding profiles, grooved on long sides and bevelled on all sides, 5 mm bevel	•	–	•	•	–	•	•	•	•	•	•	•	•	•	•	•	•	•	•	•	•	•	•	•	•	35	3)	600 625	600/600 625/625 1200/600 1250/625			
SY-03		For concealed top hat sections straight edge on all sides with 5 mm joint all round	•	–	•	•	–	•	•	•	•	•	•	•	•	•	•	•	•	•	•	•	•	•	•	•	•	12	2) 4)	600/600 625/625 1200/600 1250/600	600/595 625/620 1200/595 1250/620			
SK-08		For exposed top hat sections straight edges on long sides, bevelled edges on the short sides	•	–	•	•	–	•	•	•	•	•	•	•	•	•	•	•	•	•	•	•	•	•	•	•	•	20	2) 4)	620 645	600/595 625/620 1200/595 1250/620			

1) Edge design GK – straight edge without bevel.

Greater care is required during installation. Due to the permissible tolerance of the panel thickness of ± 1 mm and the lack of a bevel, differences in height can become visible.

Additional painting of the side edges of the panels is recommended.

2) The grid dimension applies as the billing or order dimension.

3) Installation with cross joint pattern (four tile corners meet at one point) requires careful installation.

4) The panel dimensions are smaller than the grid dimensions.

5) Special sizes only on request. For lengths over 1800 mm, please contact customer service.

6) Maximum panel width 600 mm.

7) For screw mounting, the profile width also applies to the wooden substructure.

8) For HERADESIGN® Plano, in edges AK-01, SK-06, VK-09, SY-02, the bevel is only 3 mm.

# Handling tips and installation guidelines

HERADESIGN® acoustic panels are carefully packaged and quality-tested for delivery to building sites. Proper handling and suitable working conditions are also important factors in achieving a high-quality ceiling design. Only through careful work and high product quality standards can an excellent result be guaranteed.



## MATERIAL AND HUMIDITY

Due to the organic nature of wood as a component in HERADESIGN® panels, minor deviations in size cannot be ruled out. Particularly in strongly fluctuating humidity conditions, the panels may shrink or expand to a small degree.

Production tolerances:

- For nominal sizes (length/width/thickness):  $\pm 1$  mm
- For lengths over 1250 mm: length  $\pm 2$  mm; width/thickness  $\pm 1$  mm

Final shrinkage in a standard climate of 23°C and 50% relative humidity:

- Change of length: max.  $\pm 1$  ‰
- Change of width: max.  $\pm 3$  ‰

## COLOUR AND TEXTURE

Due to the organic nature of the raw materials magnesite and wood, differences in colour and texture may occur. The direction of installation (ideal grain direction), marked by an arrow on the back of the panel, must be observed for square panels.

Compared to standard products, A2 products have a more random surface fibre structure on the surface. The acoustic panels with the fibre textures Macro, Superfine, Fine, Fine A2 and Superfine A2 can also be painted many times without losing their outstanding sound absorption properties.

## PAINT QUALITY

Interior emulsion paint is used for colouring HERADESIGN® acoustic panels in standard white, while silicate paints based on potassium silicate with an organic binding agent additive are used for colouring HERADESIGN® acoustic panels in natural tones, pastel colours or solid colours. For applications with constant relative humidity between 80% and 90%, the paint should be used with a BFA additive.

For sheltered external applications, exterior paint must be used.

## STORAGE AND INSTALLATION CONDITIONS

HERADESIGN® acoustic panels should be installed during the last phase of a project, in a closed building environment with temperature and humidity-controlled conditions. All screed work and internal plastering must have been completed at least 14 days previously.

All building activities which create dust must be completed before the start of installation. Store the panels flat and protect against moisture and dirt. The packaging does not protect the products against rain.

HERADESIGN® products should be installed in strict accordance with Knauf Ceiling Solutions installation and storage guidelines.

Only install panels in rooms where the following conditions are guaranteed:

- For heated or air-conditioned rooms: maximum relative humidity 75%, temperature at least + 7°C
- For unheated rooms: maximum relative humidity 85%, temperature at least + 5°C

## APPLICATION

HERADESIGN® acoustic panels are suitable for applications up to a constant relative humidity of 90%.



Extensive detailed information regarding system constructions, installation and documents can be found at [www.knaufceilingssolutions.com](http://www.knaufceilingssolutions.com)



01 Wooden Boat Centre Kotka,  
Finland, HERADESIGN® Fine



